

It should consider:

- (a) Developing and advising on an exotic forest policy.
- (b) Encouraging the NEFD and MOF to collect annual figures by regions, showing areas and age classes of clearfelling and areas of replanting separate from new planting.
- (c) Pointing out the consequences of forest owners not maintaining sustained yields by regions and prepare two or three examples based on current very high levels of log exports.

- (d) Prepare a brief statement on what it sees as the current position from this review for the Minister's benefit. Many believe that the Institute must raise the alarm publicly.

Any comment should not advocate controls on export logs nor the introduction of tax incentives or disincentives. Development results from good business decisions in a favourable economic climate. But it may be necessary to refute some statements often made by politicians that there are great opportunities

in the next five to 10 years for development and employment in the forest industry.

The New Zealand Institute of Forestry Council has accepted this report and is considering further action. If members wish to comment they can send their submission C/- The Secretary, Institute of Forestry, P.O. Box 19840, Christchurch.

The professionals in rural business

Jenni Bennett*

Ms Bennett presented this information at the New Zealand Institute of Forestry's (NZIF) July 1992 Council meeting. Council agreed to provide the New Zealand Society of Farm Management (NZSFM) with tacit support and investigated the development of closer relationships between NZIF and NZSFM.

INTRODUCTION

The New Zealand Society of Farm Management Inc. is the national body of accredited professionals in rural business. Established in 1969, the Society has about 800 members who are predominantly involved in farm and primary industry management. The Society has an Executive Officer, based at the National Office in Wellington, and ten Branches throughout the country.

The Society, through its active and growing membership, has a strong involvement in a diversity of rural-based industries, and identifies closely with the future for New Zealand's primary sector.

Members of the NZSFM Inc. include farm management consultants and personnel in closely related fields such as rural valuation, finance, accounting, agribusiness, agricultural policy, economics, research and education as well as farming. Disciplines such as soils, animals, plants, horticulture, forestry, aquaculture, engineering and marketing are part of our Society.

MISSION AND OBJECTIVES

The Society aims to promote excellence in all aspects of rural business management, and encourages closer liaison within and between all sectors of New Zealand agriculture.

Its objectives are focused on the encouragement and development of new technologies and managerial systems

* Executive Officer, NZ Society of Farm Management (Inc.).

within the primary industries, promotion at all times of ethical conduct and a high standard of service to the public through a recognised registration scheme and prevention of illegal or unprofessional practices by its members.

REGISTRATION

All Society members who offer consultancy services are required to become Registered Farm Management Consultants. Applicants must satisfy rigorous academic qualification and experience criteria laid down by the Farm Management Consultants Registration Board, and undergo periodic registration reviews.

The Registration Board is an independent body, comprising four leading persons from the primary sector, which ensures the highest professional standards and conduct by consultant members of the Society, whether they practise in public, private or commercial fields.

MEMBERSHIP

Over recent years, membership of the Society has continued to increase. This is no doubt due to the recognition by many of the importance and benefits of belonging to a professional society representing the interests of those in rural business management. There are two broad categories of membership, Full and Affiliate.

Full members are either Intermediate or Senior, depending on their experience in their profession. They must have a minimum academic qualification of the Diploma of Valuation and Farm Management or a Bachelor degree in agriculture, horticulture or another rural-based discipline (or an equivalent qualification obtained at a New Zealand University or similar overseas institution).

Affiliate categories include Branch Associate, Student, Overseas and Retired. Local Branches of the Society may invite people to become Branch

Associate members who are not directly involved in management consultancy, or do not have the minimum academic qualifications of Full membership, but may be in another related organisation or profession, or farming.

Student members must be enrolled in an approved course of study at a New Zealand university. Overseas membership caters for any member not resident in New Zealand and Retired status is for any Full member now retired from professional work.

BENEFITS OF MEMBERSHIP

Members of the Society benefit from being part of an extensive professional network in a diversity of agricultural disciplines. This enables contact and communication with others in the wide field of primary industry management.

Belonging to the Society enables members to keep up-to-date on rural-based research, technologies, management systems, education, policy and economics.

Members receive the Society's quarterly magazine, "Farm Management News", and are able to participate in both local branch field days and workshops, as well as the annual National Seminar of the Society.

MEMBERSHIP DETAILS

Membership categories, requirements and current annual fees are:

	FULL:	Including GST	\$
Intermediate	Principally employed in a rural management or consultancy profession.		150
Senior	Continuously employed in the profession for three years or more.		200
	AFFILIATE:		
Branch Associate	Not involved in professional management or having the required qualifications, but in a related organisation or profession, or farming.		75

Student	Enrolled in an approved university course of study.	25
Overseas	Any member residing overseas	75
Retired	Former full member now retired	70

FOR MORE INFORMATION

The NZSFM welcomes inquiries. If you feel you are suitably qualified and wish to become a member, or would like the address of your local Branch, please contact: The Executive Officer, Ms Jenni Bennett, P.O. Box 3116,

Wellington. Ph 04 472 3963, Fax 04 471 2173.

The NZSFM would like to invite foresters who are capable of whole farm management planning, including finance, cash flows, accounts and with an understanding of husbandry to join our Society and apply to our Registration Board for registration.

The Society recognises other Institutes, such as the New Zealand Institute of Agricultural Science whose members

may apply for Registration without joining our Society. We believe members of the NZIF will be recognised in a similar manner, and our Rules Review subcommittee will be confirming this shortly.

We believe it is important that our Society offers consultants in all aspects of Primary Industry.

Members of the NZIF will benefit by belonging to our extensive network of rural consultants, which services New Zealand nationwide.

FORESTRY IDENTITY

Raymond William Cleland

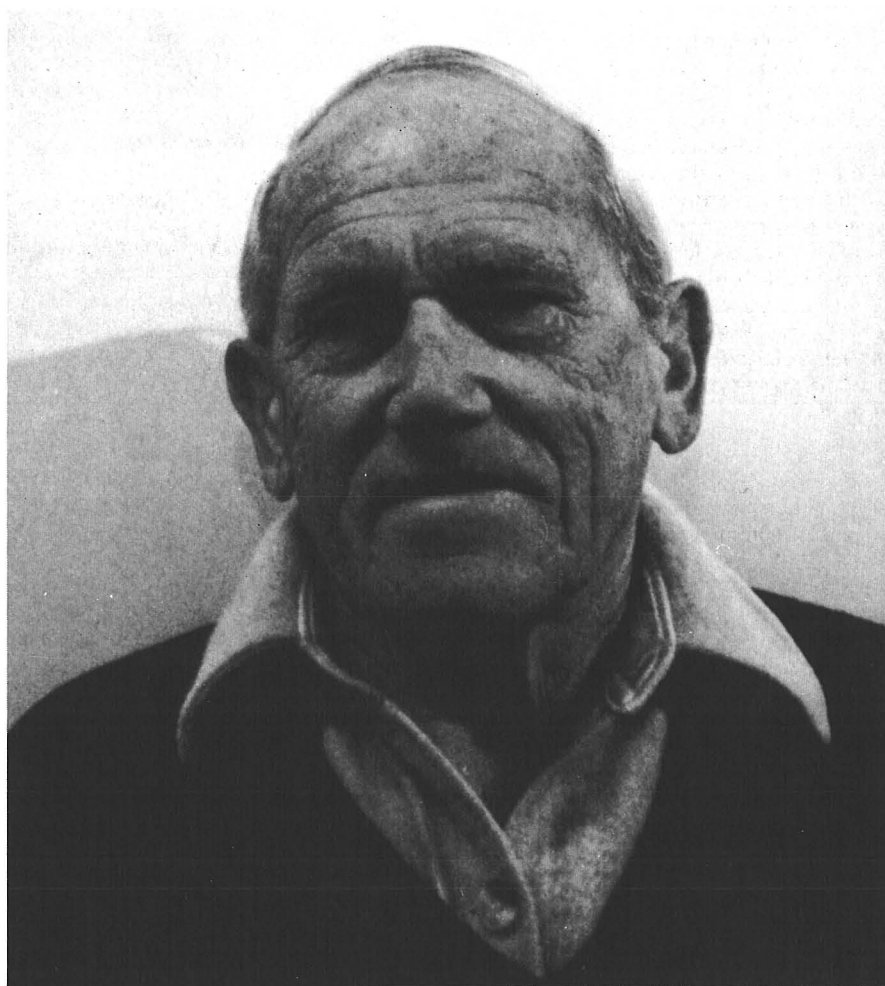
Geoff Chavasse

One of the more versatile members of the NZIF is Ray Cleland who, at the age of 72, spends most of his time at Pukerau Nursery which is owned by his son Arne and daughter-in-law Jenny.

A third-generation New Zealander with Scottish (Clan McNab) and northern Irish antecedents, Ray was born at Feilding in January 1920 with an identical twin brother, into a family of three boys and four girls.

He attended Feilding Agricultural High School 1932-35 and up to 1941 he trained as an engineering draughtsman. He saw war service in the Middle East and Italy to 1945 and, during that time, resolved to follow an outdoor life. This began at Karioi Forest in 1946 with a Forest Service Traineeship during which he learnt exotic forest establishment and native forest mensuration. He then went to Sweden to work for a spell with the Swedish Forest Service. Even then, he found that environmental practices were well built into the Swedish forest industry; and when he returned in 1989 for a forestry tour in that country he found that, even though in the 40-year interval the industry had been fully mechanised, environmental safeguards were still of great importance.

On his return to New Zealand in 1949 Ray was engaged in deer culling and "wildlife ranging," after which he became Ranger-in-Charge of Arthur's Pass National Park from 1950 to 1958. He was then appointed as the first Supervisor of National Parks of New Zealand. In 1962 he was delegate to the first World Conference on National Parks in Seattle, and subsequently represented New Zealand on the International Com-



Ray Cleland

mission on National Parks and also an International Union for the Conservation of Nature and Natural Resources planning committee.

He resigned his position, in Wellington, with the National Parks Authority in 1966 and elected to become manager of the newly-proclaimed