

NEW ZEALAND INSTITUTE OF FORESTERS

(Incorporated in 1929)

NATIONAL OFFICERS

PRESIDENT:	P.J. Thode
VICE PRESIDENT:	P.F. Berg
SECRETARY:	J.S. Holloway
TREASURER:	J.M. Valentine
COUNCIL:	G. Cameron, J.A. Gleed, E.R. Crozier, E.H. Bunn, L.W. Vaughan, B. Everts
JOURNAL EDITOR:	D.J. Mead, School of Forestry, University of Canterbury, Private Bag, Christchurch
SECRETARIAT:	P.O. Box 12-314, Wellington North

LOCAL SECTION OFFICERS

NORTHLAND	President:	Mark Smorti, N.Z. Forest Service, P.O.Box 249, Kaikohe
	Secretary:	Roger Kay, P.O. Box 1860, Whangarei
AUCKLAND:	Secretary:	Mike Riordan, Henderson & Pollard Ltd, P.O. Box 8551, Auckland
	Chairperson:	Russell Dale, N.Z. Forest Service, P.O. Box 39, Auckland
ROTORUA:	Secretary:	Peter Clark, c/- P.F. Olsen & Co. Ltd., P.O. Box 1127, Rotorua
	Chairperson:	Jeremy Fleming, c/- N.Z. Forest Products, Private Bag, Tokoroa
HAWKES BAY:	Secretary:	Steve Chandler, N.Z. Forest Service, P.O. Box 348, Napier
	Chairperson:	Tim Aitken, Carter Holt Central Forestry Division, Napier
WELLINGTON:	Secretary:	Mike Hargreaves, Rural Bank, P.O. Box 3688, Wellington
	Chairperson:	John Halkett, N.Z. Forest Service, Private Bag, Wellington
NELSON:	Secretary:	Don Cooper, c/- N.Z.F.S. Tapawera, Private Bag, Wakefield
	Chairperson:	Ralph Lonsdale, 8 Barnicoat Place, Richmond, Nelson
WESTLAND:	Secretary:	Mike Orchard, N.Z. Forest Service, P.O. Box 138, Hokitika
	Chairperson:	Bruce Watson, N.Z. Forest Service, P.O. Box 138, Hokitika
CANTERBURY:	Secretary:	Karl Schasching, 70 Rahera Street, Christchurch 2
	Chairperson:	Lisa Crozier FRI, P.O. Box 31-011, Christchurch
OTAGO/ SOUTHLAND:	Secretary:	Richard Thum, 31D Signal Hill Road, Dunedin
	Chairperson:	Sandy Rae, N.Z. Forest Service Private Bag, Invercargill Lou Sanson, N.Z. Forest Service Private Bag, Invercargill
FORSOC:	Secretary:	c/- School of Forestry University of Canterbury, Private Bag, Christchurch

Hugo Hinds held range of senior positions

Hugo Hinds died at the age of 77, after a short illness, on January 7, 1987. He had retired from the position of Director of Research, FRI, in 1972.

Born in Eynsham, England, Hugo was educated at Oxford High School and graduated B.A. in Forestry from St Catherine's Society, Oxford in 1931. He served as a Deputy Conservator in the Burma Forest Service until 1948, except for the war years when he served with distinction in the Burma Rifles, and spent a short, post-war period in civilian administration. He was awarded the O.B.E. in 1948 for his services.

Hugo joined the New Zealand Forest Service in 1948, serving initially as a forester and silviculturist in Rotorua Conservancy, FRI, and then Head Office. From 1961 he was Conservator Canterbury, Conservator Southland and, finally, Director of Research at FRI (1966-72). He represented the Service at the First World Eucalypt Conference in 1956 and the 12th IUFRO Congress at Oxford, England, 1956 and led the Forest Service seed collecting mission to Mexico 1959-60.

Colleagues from his early days in New Zealand recall how quickly Hugo came to understand the forestry scene in New Zealand. His personal qualities and sound professional judgement are reflected in the range of senior Forest Service positions he held during his career.

We think of Hugo as a quiet man with a roguish sense of humour. The satirical poem, *The Working Plan for Huki Puki State Forest* (Newsletter 1969), that he wrote is one of the classics of forestry literature, and aptly illustrates both his humour and his writing skills.

Hugo lived in Rotorua throughout his retirement, and for many years was a member of the Rotorua Golf Club and the Rotorua Bridge Club. He is survived by his daughter, Jane.

J.A. Kininmonth

Gerry Watt was talented young forester

The death of Gerry Watt on January 10 1987, ended a stern struggle with disease that Gerry had continuously fought from age 21.

The whole profession has suffered from the loss of a vigorous talented forester at the early age of 37.

Raised in Taranaki on the family farm, he early received an exposure to forests

through the family interest in farm forestry. His university career paralleled those of many well-known forestry personalities such as Dennis Neilson and David Viles between 1968 and 1971. He had his first battle with the disease at the end of this period being 10 months out of action.

After his return to fitness, the N.Z. Forest Service posted him to Hamner (1972-74) and Ashley (1975-77) where he was involved in production and recreation planning, followed by Waitemata (1978-82).

In 1982 he joined P.F. Olsen & Company Ltd, and in 1985 he gained recognition as a forest consultant.

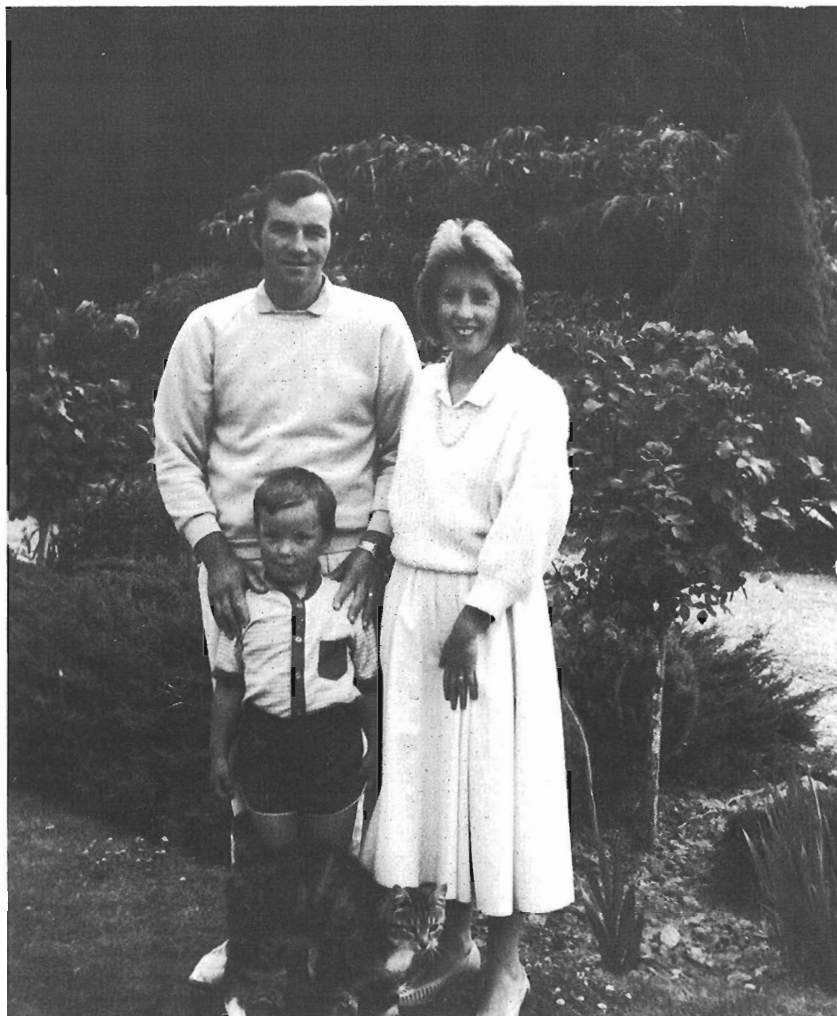
He distinguished himself in all his professional work but particularly secured the respect and affection of those people who entrusted Gerry with operational control of their projects. A classic case is Great Mercury Island where the difficulties of isolation and logistics of supply to an island operation were overcome with distinctive panache.

Off duty, Gerry performed with skill in a wide range of sports being a prominent small-bore rifleman, an angler of skill and an enthusiastic cricketer. He took office in these clubs and was an organizing participant in the Business-house Cricket competitions and indoor cricket as well as golf and squash.

His fortitude and cheerful refusal to accept that disease should dictate his activities endeared him to all of us who enjoyed his professional company.

Our sympathy goes out to Francis and young Cameron in their loss.

Peter F. Olsen.



Gerry Watt, pictured with his family — wife Francis and son Cameron

The Kirk Horn

Thomas Kirk, F.L.S., (1828-98) arrived in Auckland in 1863 and devoted himself to botany, associating himself with the Auckland Institute and Museum, of which he was an original member, secretary and curator, before he became a professor of natural sciences at Wellington College, then attached to the University of New Zealand. He published extensively, both overseas and in the *Transactions* (130 titles in first 30 volumes), and produced *The Forest Flora of New Zealand* in 1889. He was Chief Conservator of State Forests from 1885 to 1888. Professor H.B. Kirk (Victoria University) and T.W. Kirk (Agriculture Department) were his sons, the Kirk family being a rare case of a family of scientists in New Zealand.

In 1874, Julius Vogel passed the first Forests Act, providing for state forests in the interest of forest conservation, and in

the following year he appointed Captain I. Campbell Walker, of Madras, as the first Conservator of State Forests. Campbell Walker inspected and reported on the New Zealand forests during his 15 months' stay, and was associated with Kirk on his tours of inspection. He left New Zealand in 1877 after a good deal of unpleasantness arising from political opposition to Vogel's Act. (For details of his life and work, see *New Zealand Forest Service Information Series* 54).

New Zealand's first Conservator of Forests commemorated his association with Thomas Kirk by presenting him with a silver-mounted drinking horn, engraved "To Professor Kirk from Capt'n Campbell Walker 1877". The drinking horn remained in the Kirk family until recently, when it came into the possession of Mrs Lanna

Brown and Mr A.D. McKinnon, of Wellington.

Set of Conditions

After a 20-year gestation, the Royal Society has asked the Institute if it would establish a set of conditions for the award and assume the responsibility for making the award.

The Institute has drawn up conditions which it will discuss with the Royal Society, whose wish it is that this award have the standing in the discipline of forestry that the Hector and Hutton medals have in their fields.

It is the Institute's wish that the award be made in recognition of outstanding contributions to forestry and be made in alternate years, starting in 1987.

The flask, which is the tangible link with Professor Kirk, will be held in the Royal Society; a medal will be struck and awarded.