



**ADDERLEY  
HEAD**

ENVIRONMENTAL LAW SPECIALISTS

# NES Plantation Forestry: Implications for foresters

Chris Fowler, Partner, Adderley Head

5 September 2017

# Outline of Presentation

- What is the NES?
- What effect will it have?
- Key features
- Areas of uncertainty
- Overall implications

Resource Management (National Environmental Standards for Plantation Forestry) Regulations 2017 (Not in force)

12

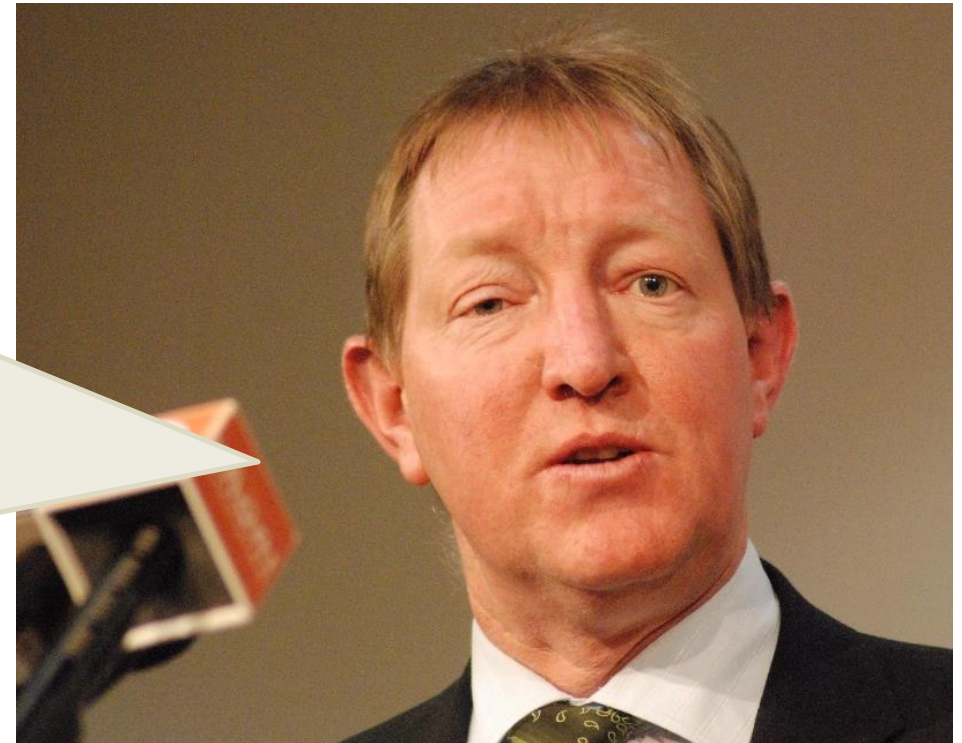
1	Title	12
2	Commencement	12
3	Part 1: Preliminary provisions	12
4	Interpretation	12
5	Transitional, savings, and related provisions	12
6	Short title	12
7	Part 2: Regulation of plantation forestry activities	12
8	Part 3: Discharge of effluent	12
9	Part 4: Discharge of effluent	12
10	Part 5: Discharge of effluent	12
11	Part 6: Discharge of effluent	12
12	Part 7: Discharge of effluent	12
13	Part 8: Discharge of effluent	12
14	Part 9: Discharge of effluent	12
15	Part 10: Discharge of effluent	12
16	Part 11: Discharge of effluent	12
17	Part 12: Discharge of effluent	12
18	Part 13: Discharge of effluent	12
19	Part 14: Discharge of effluent	12
20	Part 15: Discharge of effluent	12
21	Part 16: Discharge of effluent	12
22	Part 17: Discharge of effluent	12
23	Part 18: Discharge of effluent	12
24	Part 19: Discharge of effluent	12
25	Part 20: Discharge of effluent	12
26	Part 21: Discharge of effluent	12
27	Part 22: Discharge of effluent	12
28	Part 23: Discharge of effluent	12
29	Part 24: Discharge of effluent	12
30	Part 25: Discharge of effluent	12
31	Part 26: Discharge of effluent	12
32	Part 27: Discharge of effluent	12
33	Part 28: Discharge of effluent	12
34	Part 29: Discharge of effluent	12
35	Part 30: Discharge of effluent	12
36	Part 31: Discharge of effluent	12
37	Part 32: Discharge of effluent	12
38	Part 33: Discharge of effluent	12
39	Part 34: Discharge of effluent	12
40	Part 35: Discharge of effluent	12
41	Part 36: Discharge of effluent	12
42	Part 37: Discharge of effluent	12
43	Part 38: Discharge of effluent	12
44	Part 39: Discharge of effluent	12
45	Part 40: Discharge of effluent	12
46	Part 41: Discharge of effluent	12
47	Part 42: Discharge of effluent	12
48	Part 43: Discharge of effluent	12
49	Part 44: Discharge of effluent	12
50	Part 45: Discharge of effluent	12
51	Part 46: Discharge of effluent	12
52	Part 47: Discharge of effluent	12
53	Part 48: Discharge of effluent	12
54	Part 49: Discharge of effluent	12
55	Part 50: Discharge of effluent	12
56	Part 51: Discharge of effluent	12
57	Part 52: Discharge of effluent	12
58	Part 53: Discharge of effluent	12
59	Part 54: Discharge of effluent	12
60	Part 55: Discharge of effluent	12
61	Part 56: Discharge of effluent	12
62	Part 57: Discharge of effluent	12
63	Part 58: Discharge of effluent	12
64	Part 59: Discharge of effluent	12
65	Part 60: Discharge of effluent	12
66	Part 61: Discharge of effluent	12
67	Part 62: Discharge of effluent	12
68	Part 63: Discharge of effluent	12
69	Part 64: Discharge of effluent	12
70	Part 65: Discharge of effluent	12
71	Part 66: Discharge of effluent	12
72	Part 67: Discharge of effluent	12
73	Part 68: Discharge of effluent	12
74	Part 69: Discharge of effluent	12
75	Part 70: Discharge of effluent	12
76	Part 71: Discharge of effluent	12
77	Part 72: Discharge of effluent	12
78	Part 73: Discharge of effluent	12
79	Part 74: Discharge of effluent	12
80	Part 75: Discharge of effluent	12
81	Part 76: Discharge of effluent	12
82	Part 77: Discharge of effluent	12
83	Part 78: Discharge of effluent	12
84	Part 79: Discharge of effluent	12
85	Part 80: Discharge of effluent	12
86	Part 81: Discharge of effluent	12
87	Part 82: Discharge of effluent	12
88	Part 83: Discharge of effluent	12
89	Part 84: Discharge of effluent	12
90	Part 85: Discharge of effluent	12
91	Part 86: Discharge of effluent	12
92	Part 87: Discharge of effluent	12
93	Part 88: Discharge of effluent	12
94	Part 89: Discharge of effluent	12
95	Part 90: Discharge of effluent	12
96	Part 91: Discharge of effluent	12
97	Part 92: Discharge of effluent	12
98	Part 93: Discharge of effluent	12
99	Part 94: Discharge of effluent	12
100	Part 95: Discharge of effluent	12

Resource Management (National Environmental Standards for Plantation Forestry) Regulations 2017 (Not in force)

12

# The NES has arrived!

*The NES "...will better protect the environment while also improving the productivity of the forestry sector by applying consistent environmental standards to reduce operational costs."*



# What is the NES?

Afforestation

Earthworks

Forestry  
quarrying

River  
crossings



Pruning &  
thinning to  
waste

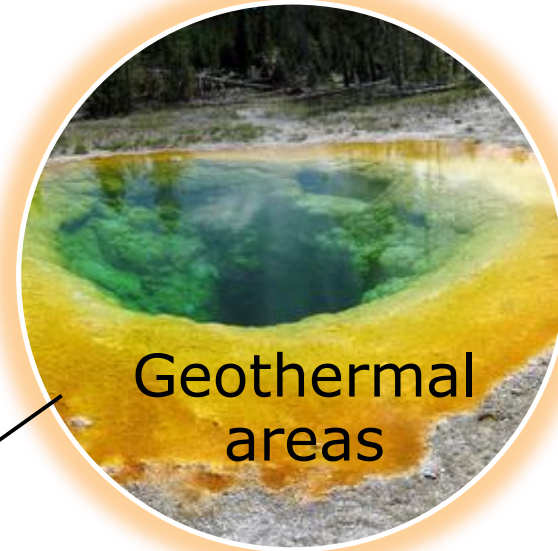
Harvesting

Mechanical land  
preparation

Replanting



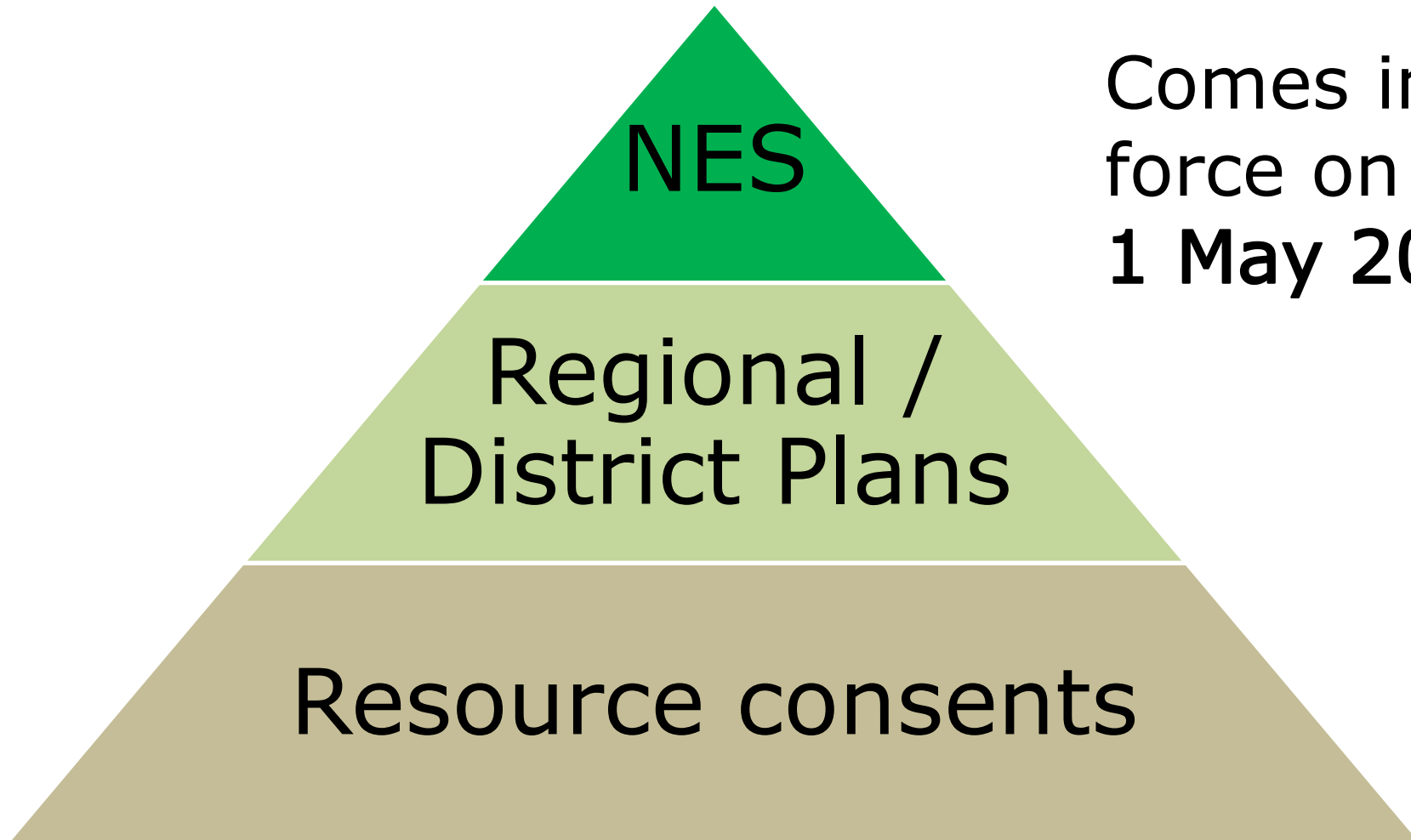
## 'Local' Rules



Matters  
where a  
Council can  
be more  
stringent

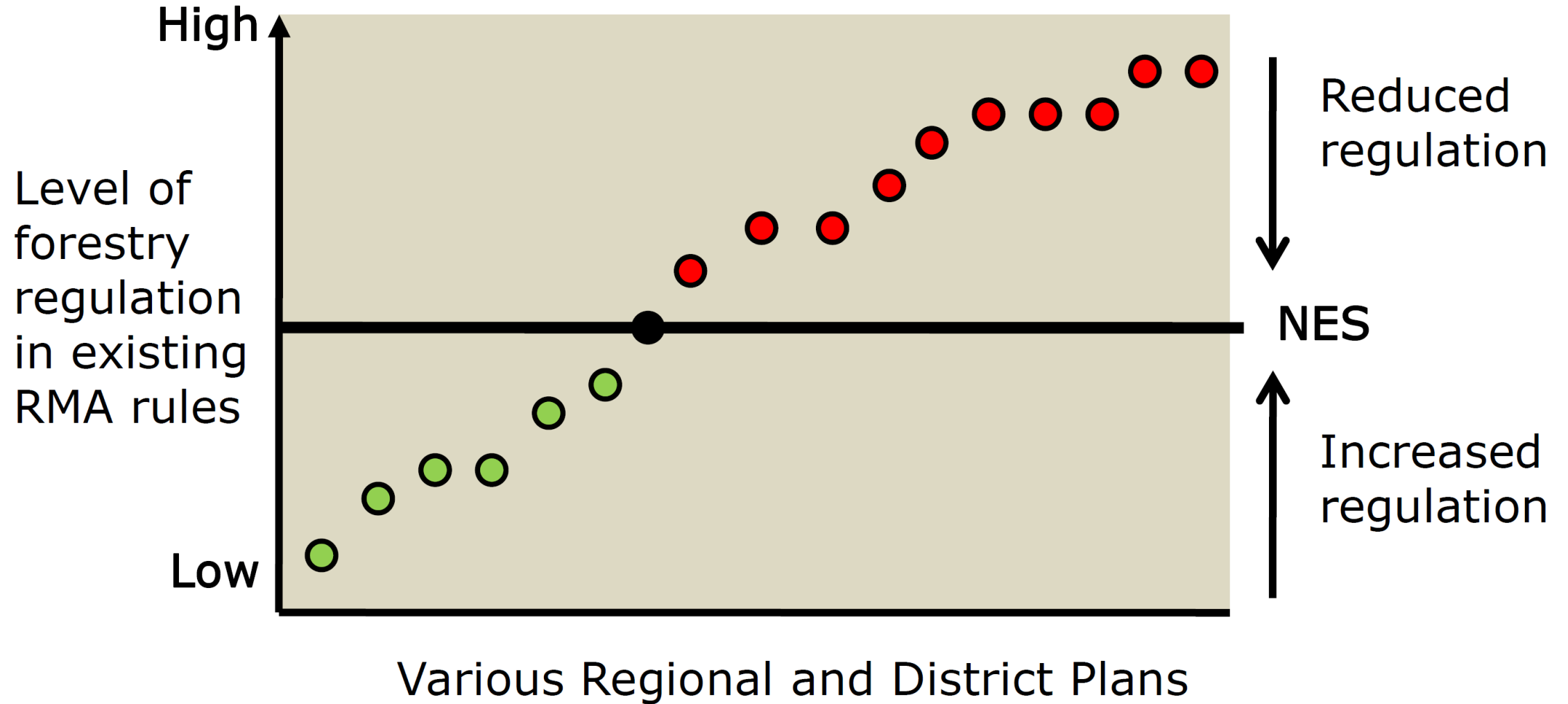


# Legal effect



Comes into  
force on  
**1 May 2018**

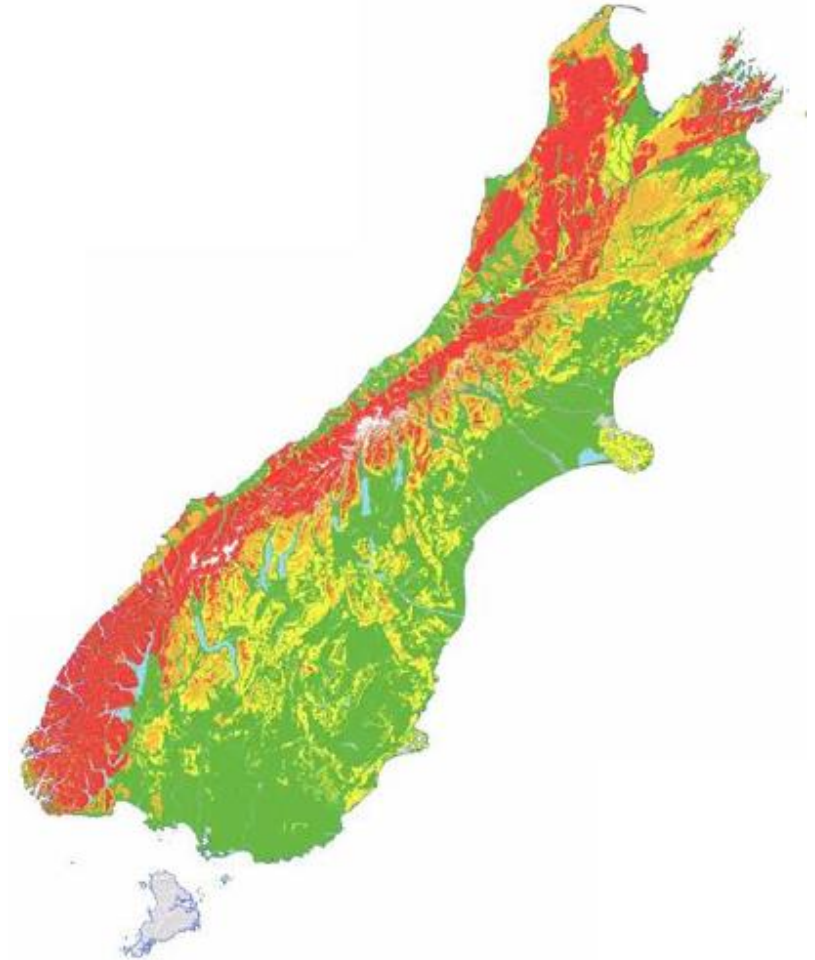
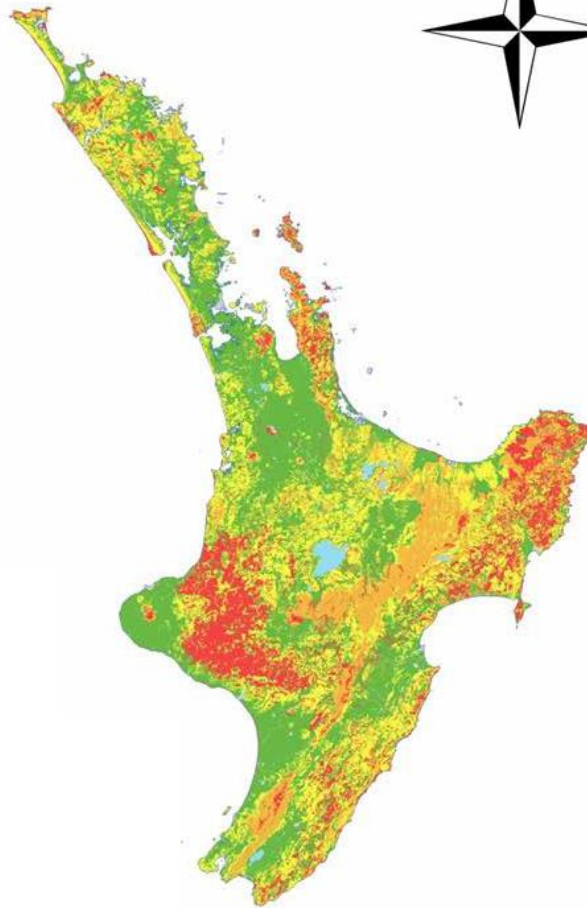
# Practical effect



# Erosion Susceptibility Classification

## Legend

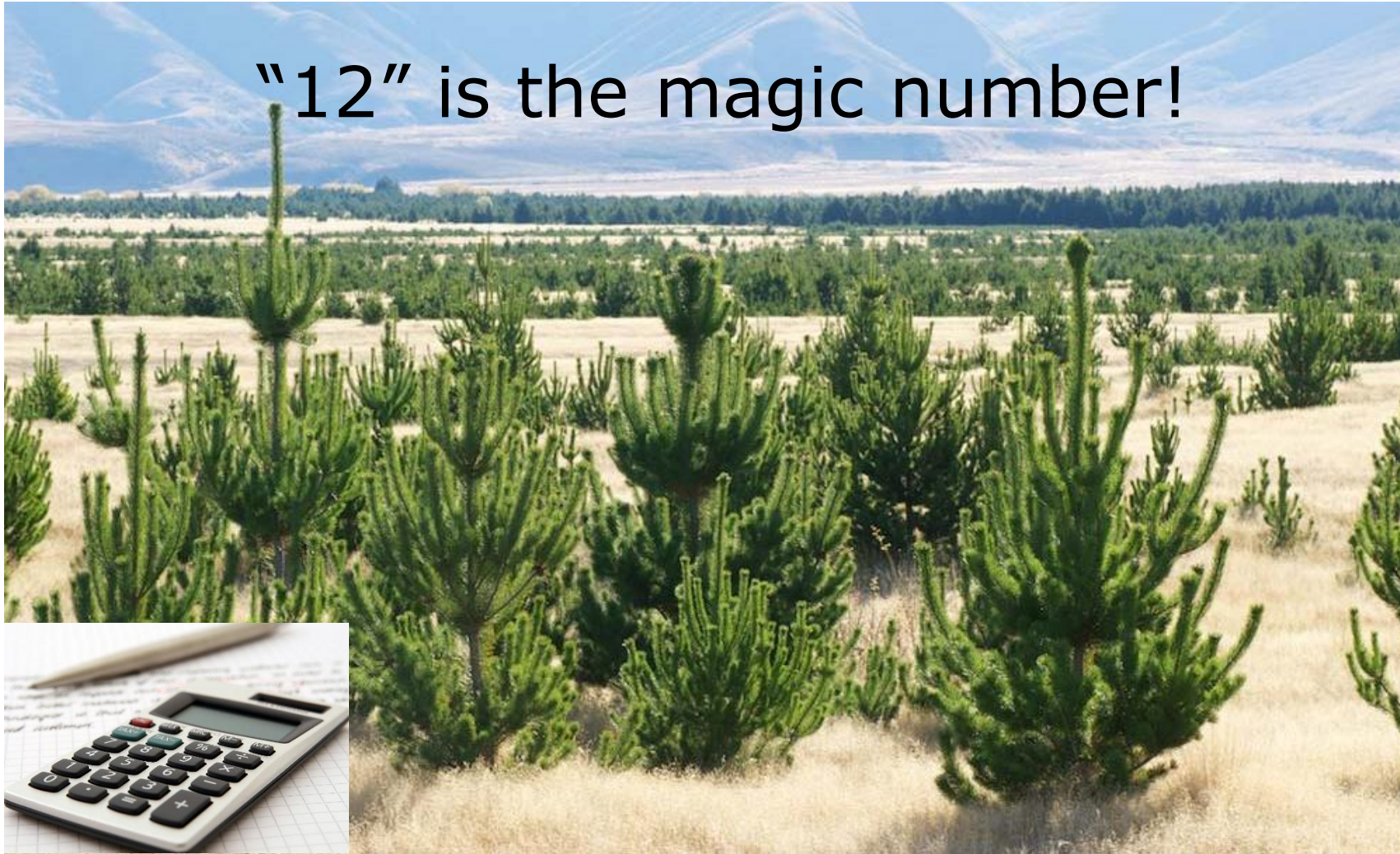
### ESC2017





# Wilding Tree Risk Calculator

“12” is the magic number!



# Forestry Management Plans





# River Crossings



Impact on existing structures?



# “Significant Natural Areas”

*significant natural area means an area of significant indigenous vegetation or significant habitat of indigenous fauna that—*

*(a)...; and*

*(b) is identified in the policy statement or plan, including by a map, a schedule, or a description of the area or by using significance criteria*



# Discharge of Sediment



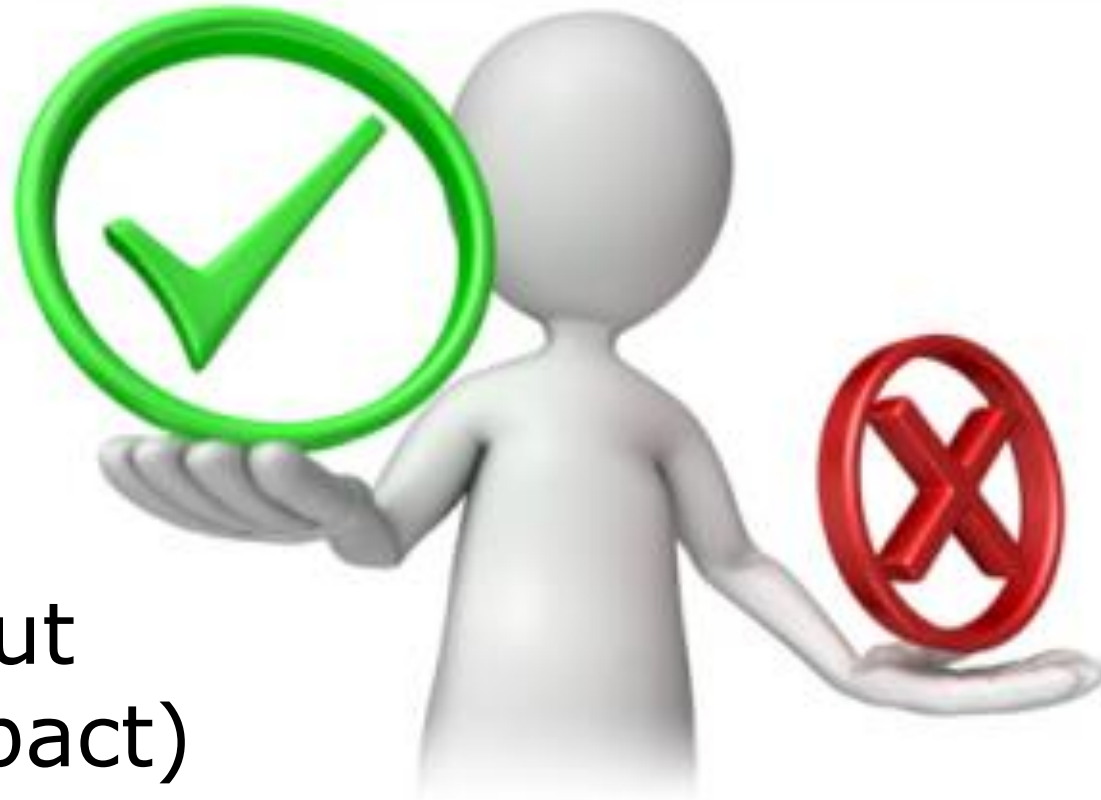
"Reasonable mixing"?

"Conspicuous change"?

# Overall Implications

Licence to  
operate

Balanced  
outcome (but  
variable impact)



Not a  
complete  
one-stop-  
shop

Reduced  
'churn'



**ADDERLEY  
HEAD**

ENVIRONMENTAL LAW SPECIALISTS

# Thank You