



**Australian Government**  
**Department of Agriculture**  
ABARES

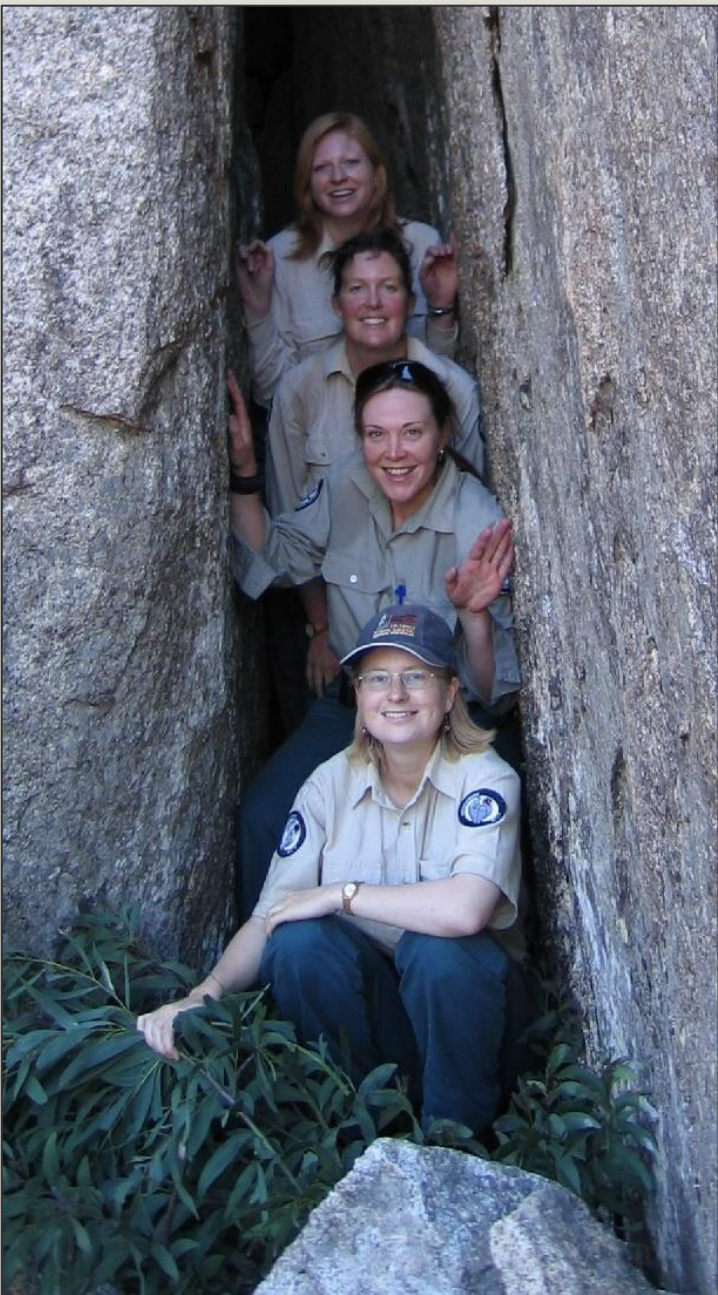
# Telling the story of Australia's forests in the connected age

**Cressida Lehmann, Claire Howell, Tony Hunn,  
Nicholas Innes, Rohan Jacobsen, Rosemary  
Lott, Martin Mutendeudzi, Steve Read**

26 August 2019



Research by the Australian Bureau  
of Agricultural and Resource Economics and Sciences







Australian Government  
Department of Agriculture  
and Water Resources  
ABARES

# Australia's State of the Forests Report 2018



A five-yearly report prepared by the Montreal Process Implementation Group  
for Australia and the National Forest Inventory Steering Committee  
on behalf of the Australian, state and territory governments

AUSTRALIAN BUREAU OF AGRICULTURAL AND RESOURCE ECONOMICS AND SCIENCES

## Montreal Process

To inform sustainable forest management  
covering all values on all tenure

1. Biodiversity
  2. Productive Capacity
  3. Ecosystem Health
  4. Soil & Water
  5. Carbon
  6. Social & Economic Benefits
  7. Legal & Institutional Framework
- 44 indicators
  - Consistent reporting
  - Information to assess progress towards sustainable forest management

Criteria

This criterion refers to the

Criterion 1

Data

The data for

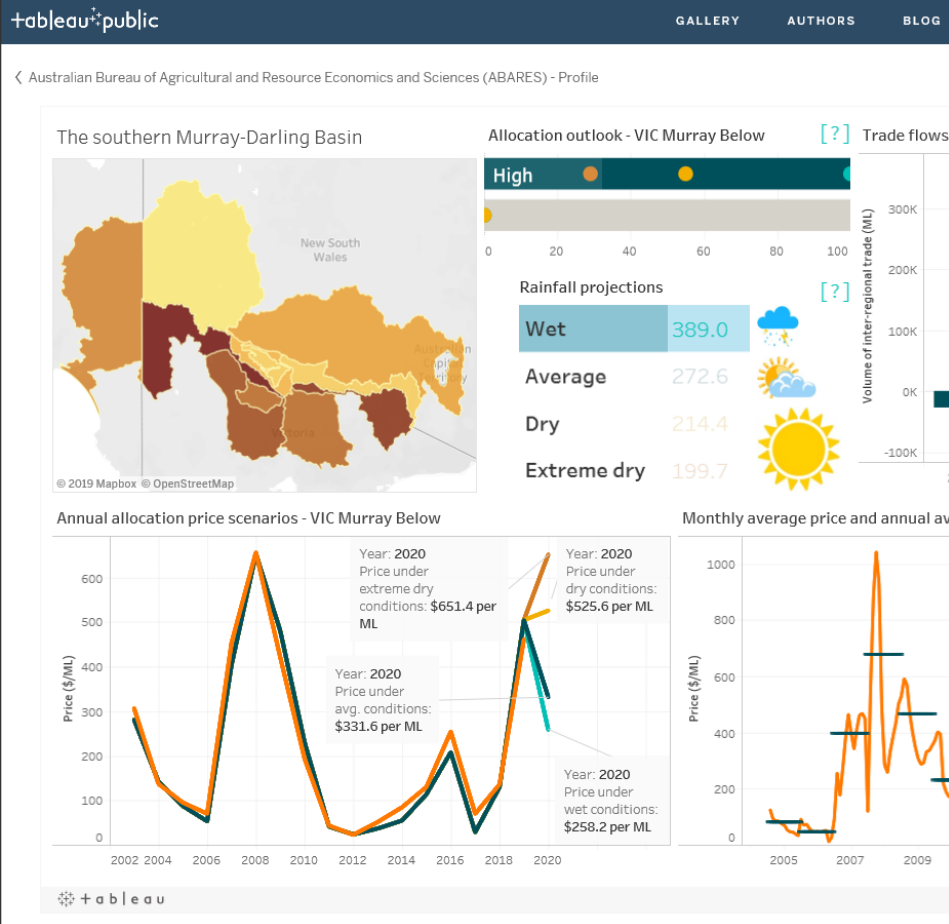
6

7

8

9

10



Australian Government  
Department of Agriculture  
ABARES

August 2019

## Australian forest profiles

### Rainforest

Australia has 3.6 million hectares of the Rainforest native forest type, which is 2.7% of Australia's total native forest area.

Australia's rainforests are typically characterised by high rainfall, lush growth and closed canopies. They rarely experience fire, and generally contain no eucalypts or only the occasional individual eucalypt tree emerging from the rainforest canopy. Rainforest tree species are typically shade-tolerant when young, and establish as saplings in the understorey of mature forest.

They grow into large trees when events such as tree falls, lightning strikes or wind damage (including from cyclones) create gaps in the canopy.

Rainforests support a significant part of Australia's biodiversity, including many of Australia's unique plant families. The tropical rainforests in Far North Queensland are rich in marsupial, frog and butterfly species, while the cool-temperate rainforests of Tasmania support diverse fungi, mosses and lichens.

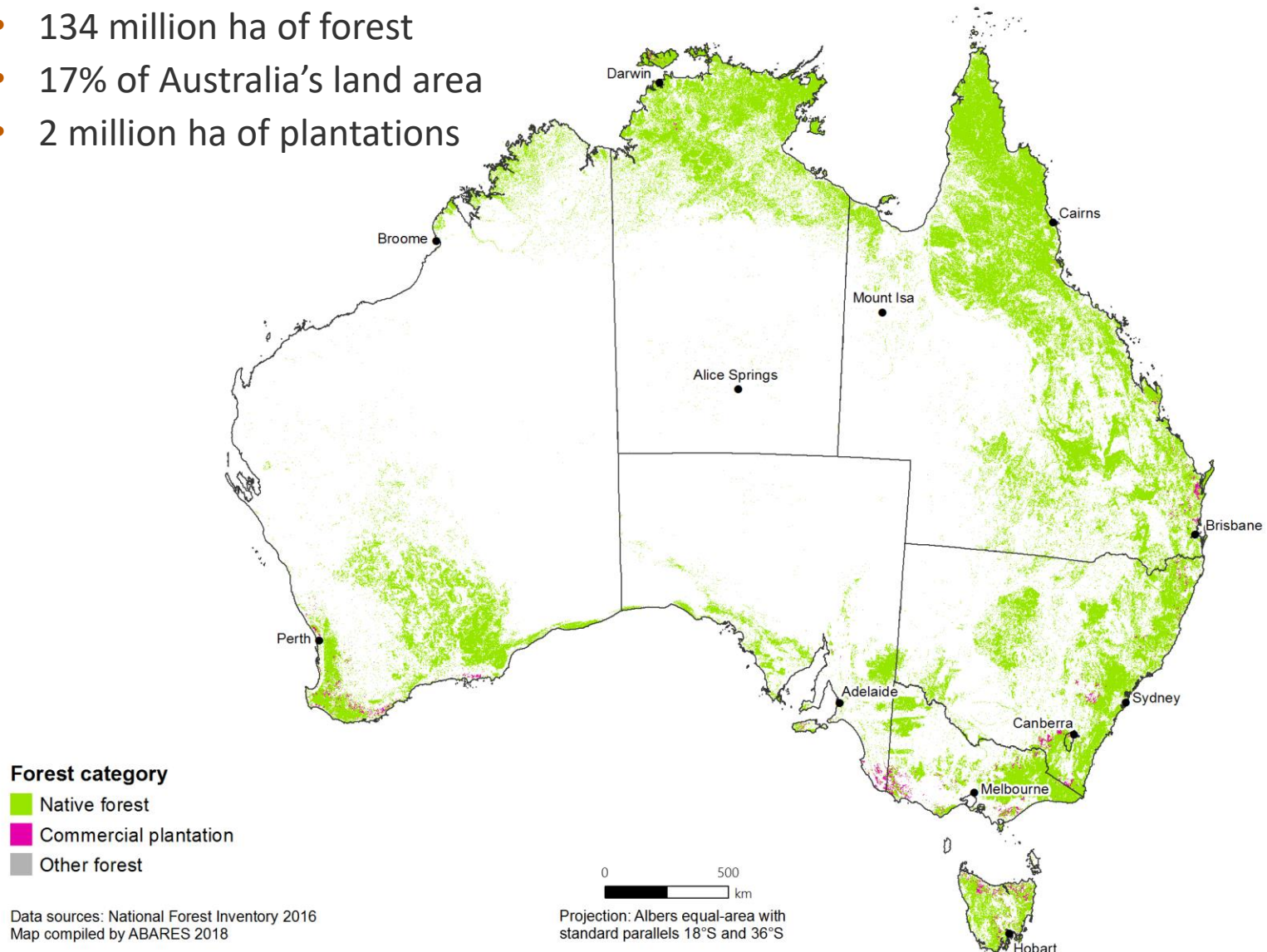
Rainforest canopy, Dorrigo National Park, New South Wales  
Robert Jacobson

- Pdf of every Criterion
- Data work books of every table and chart
- Maps
- Forest profiles
- Insights and journal articles

- Spatial datasets
  - Forests of Australia
  - Tenure of Australia's forests
  - Australia's Indigenous forest estate
  - Fire in Australia's forests

# Australia's forests

- 134 million ha of forest
- 17% of Australia's land area
- 2 million ha of plantations







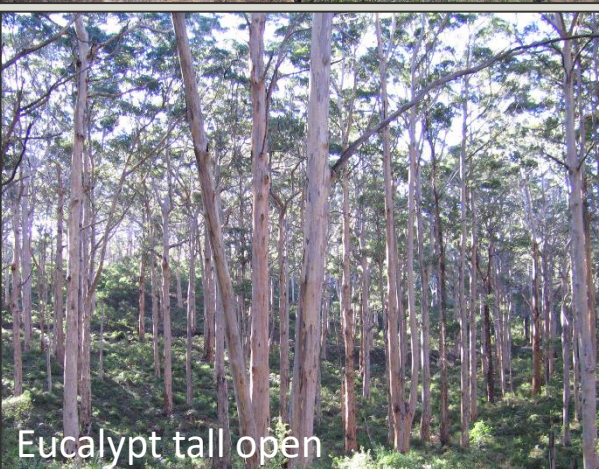
Acacia



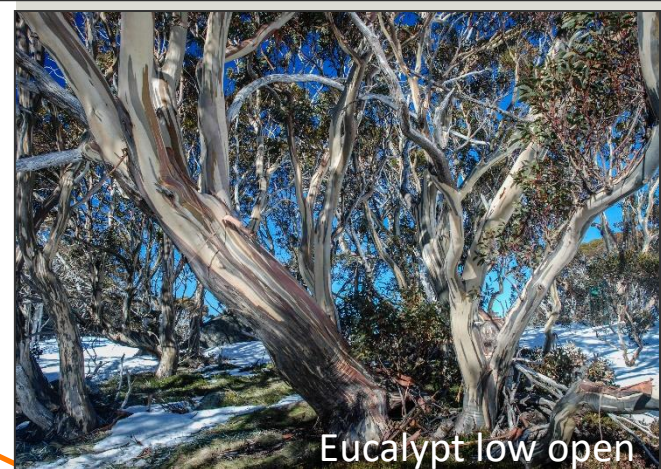
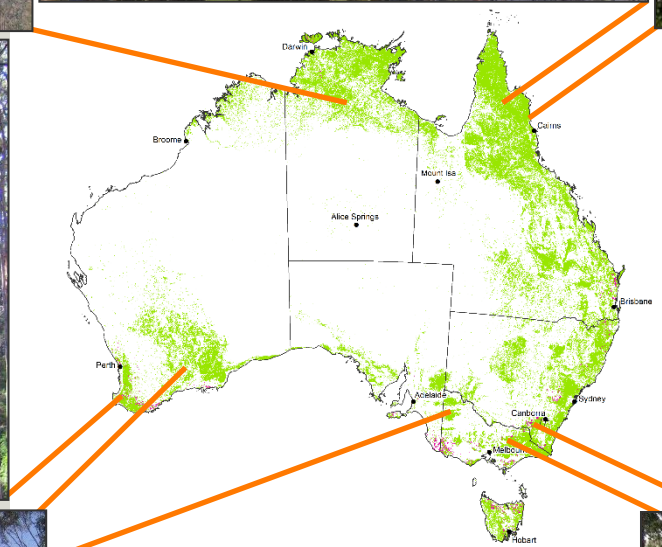
Melaleuca



Rainforest



Eucalypt tall open



Eucalypt low open



Eucalypt medium woodland



Eucalypt mallee woodland



Eucalypt tall closed



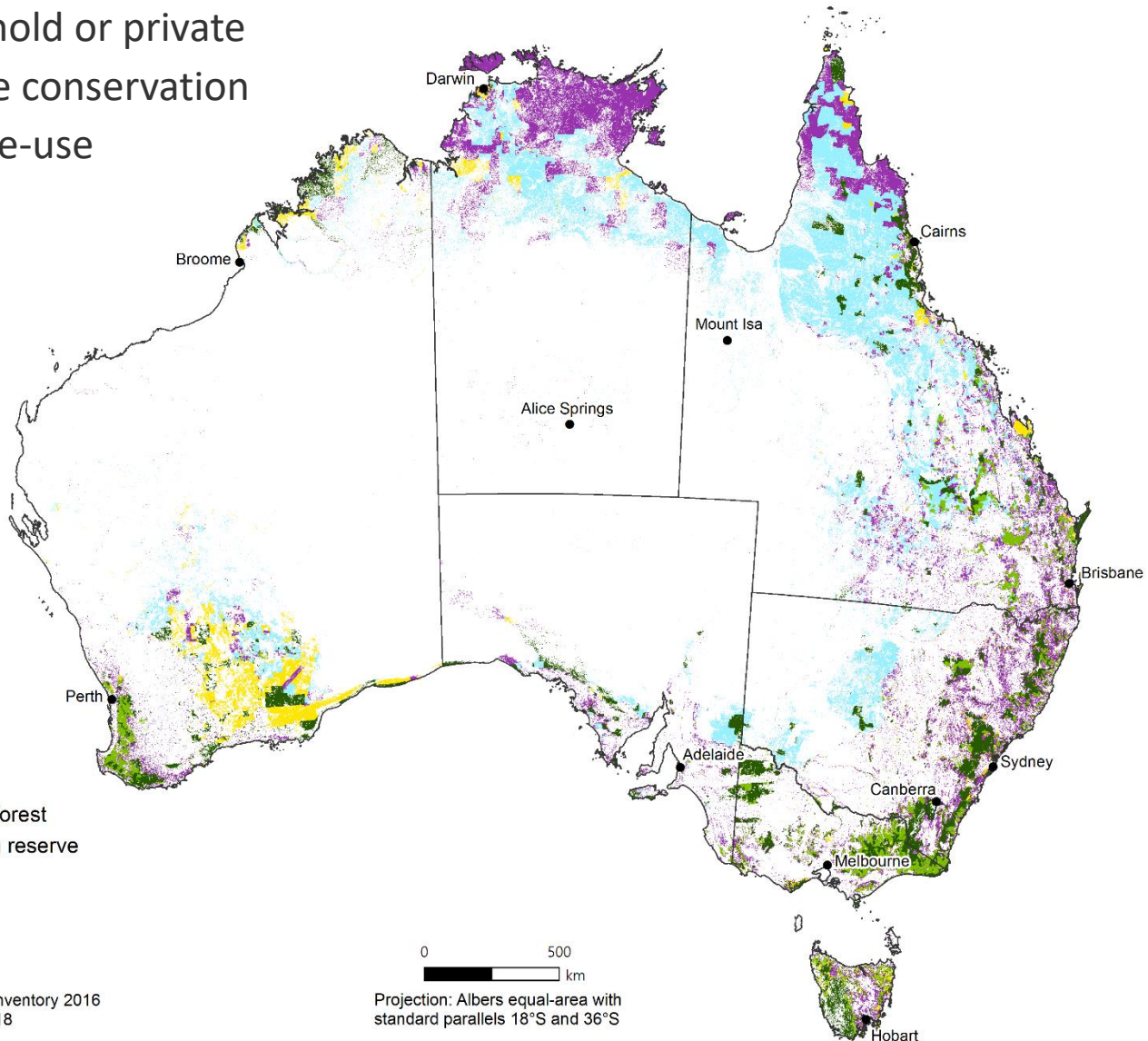
# Tenure of Australia's forest

- 69% leasehold or private
- 26% nature conservation
- 8% multiple-use

## Forest tenure

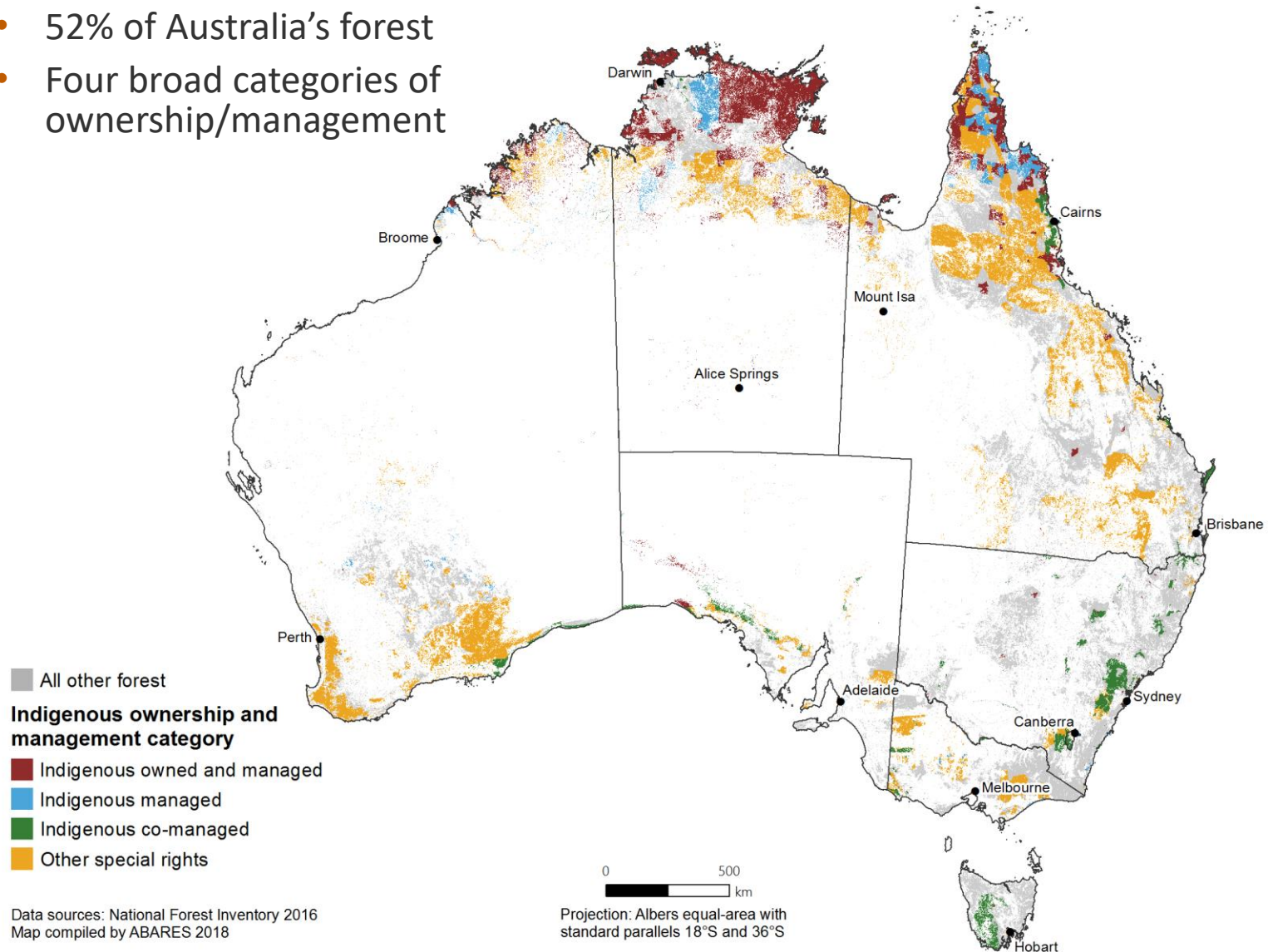
- Leasehold forest
- Multiple-use public forest
- Nature conservation reserve
- Other Crown land
- Private forest
- Unresolved tenure

Data source: National Forest Inventory 2016  
Map compiled by ABARES 2018



# Indigenous forest estate

- 52% of Australia's forest
- Four broad categories of ownership/management





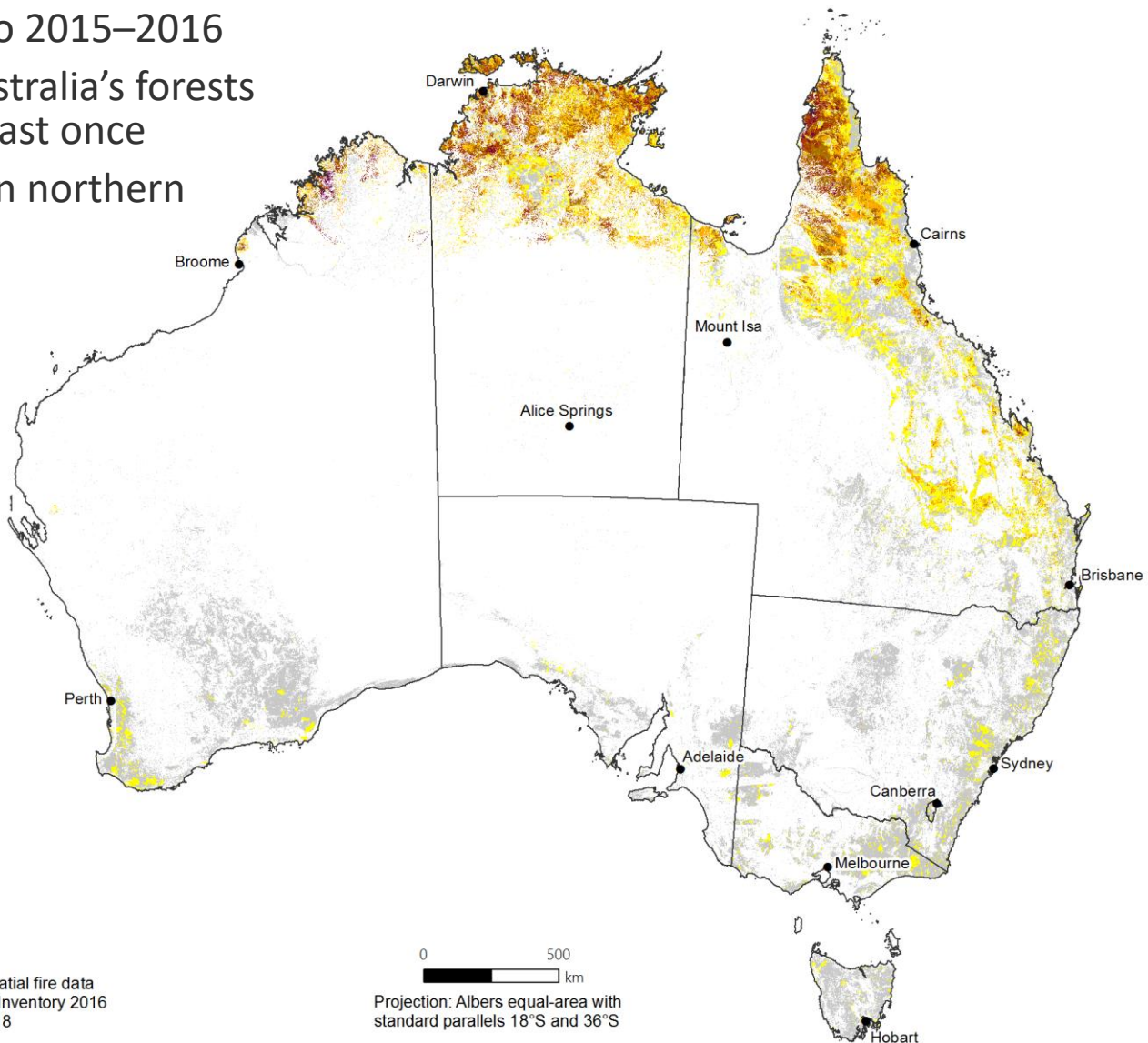
# Fire in Australia's forests

- 2011–12 to 2015–2016
- 41% of Australia's forests burnt at least once
- Most fire in northern Australia

**Forest burnt,  
by number of fires,  
2011–12 to 2015–16**

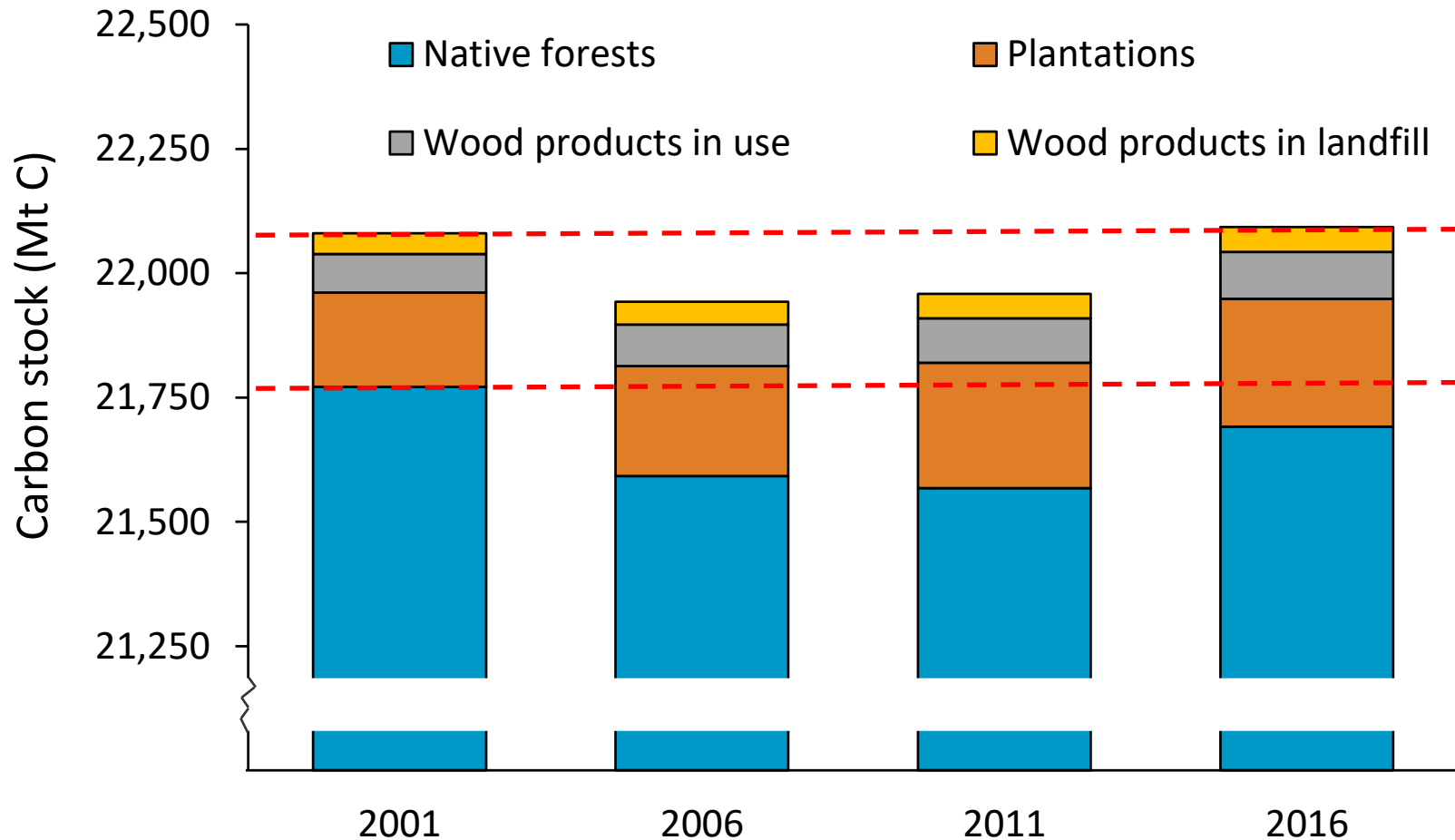


Data sources: Jurisdictional spatial fire data  
National Forest Inventory 2016  
Map compiled by ABARES 2018



# Carbon in Australia's forests

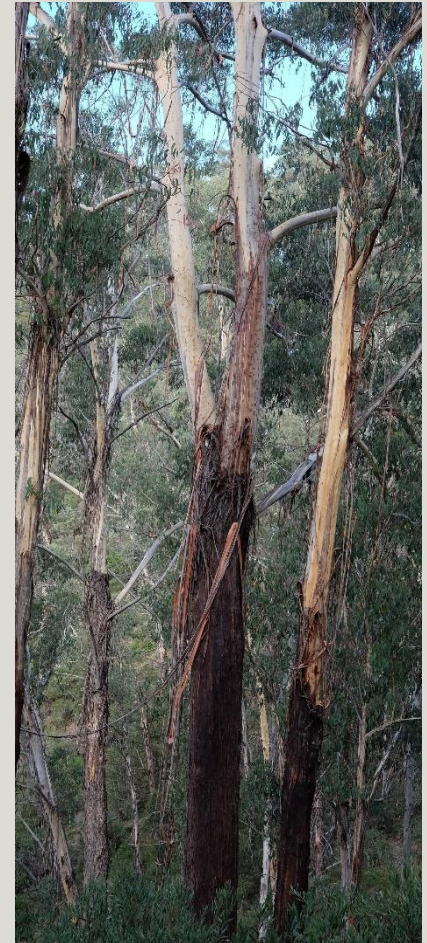
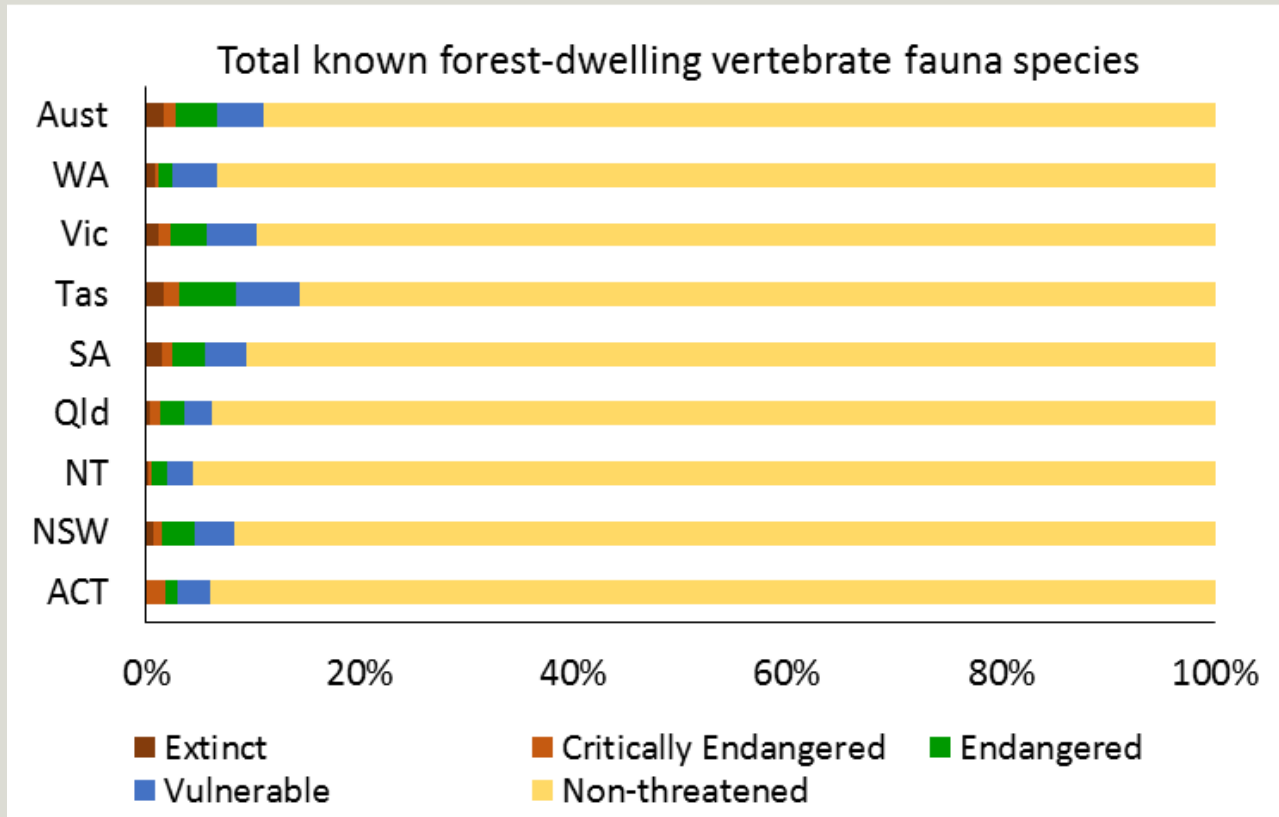
- 0.7% variation in forest carbon stocks 2001– 2016





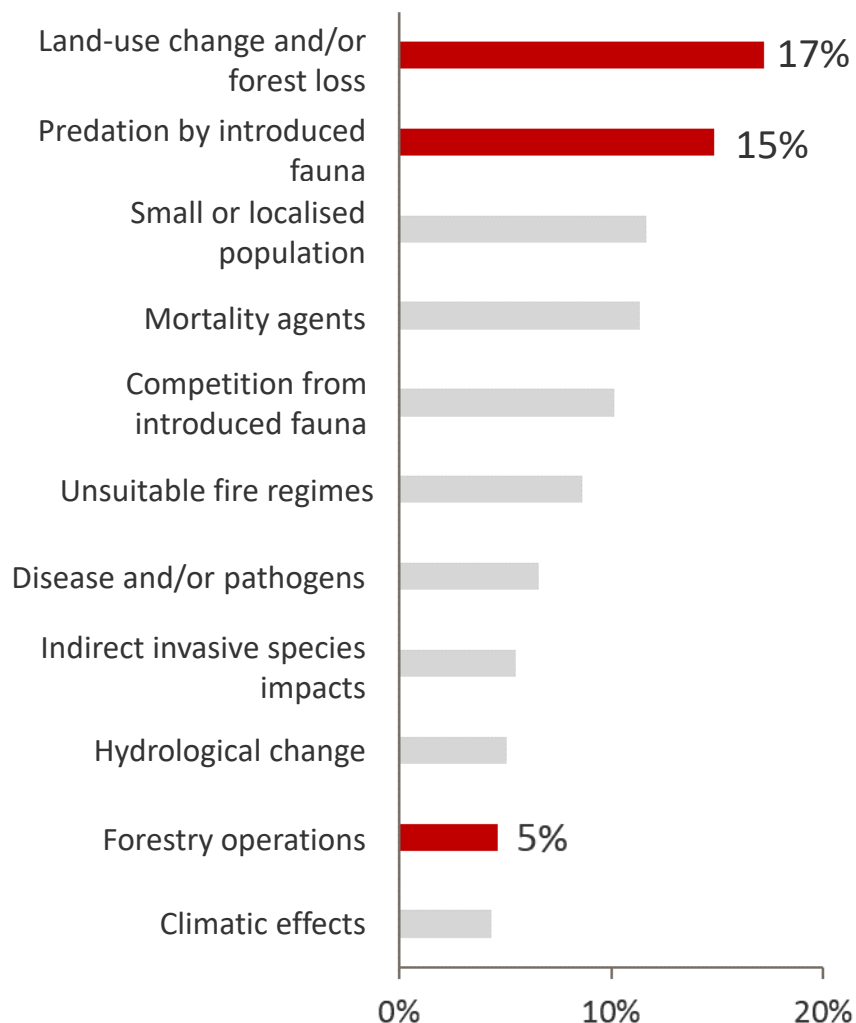
# Australia's forest-dwelling species

- 2,486 forest-dwelling fauna species
- >16,836 forest-dwelling flora species

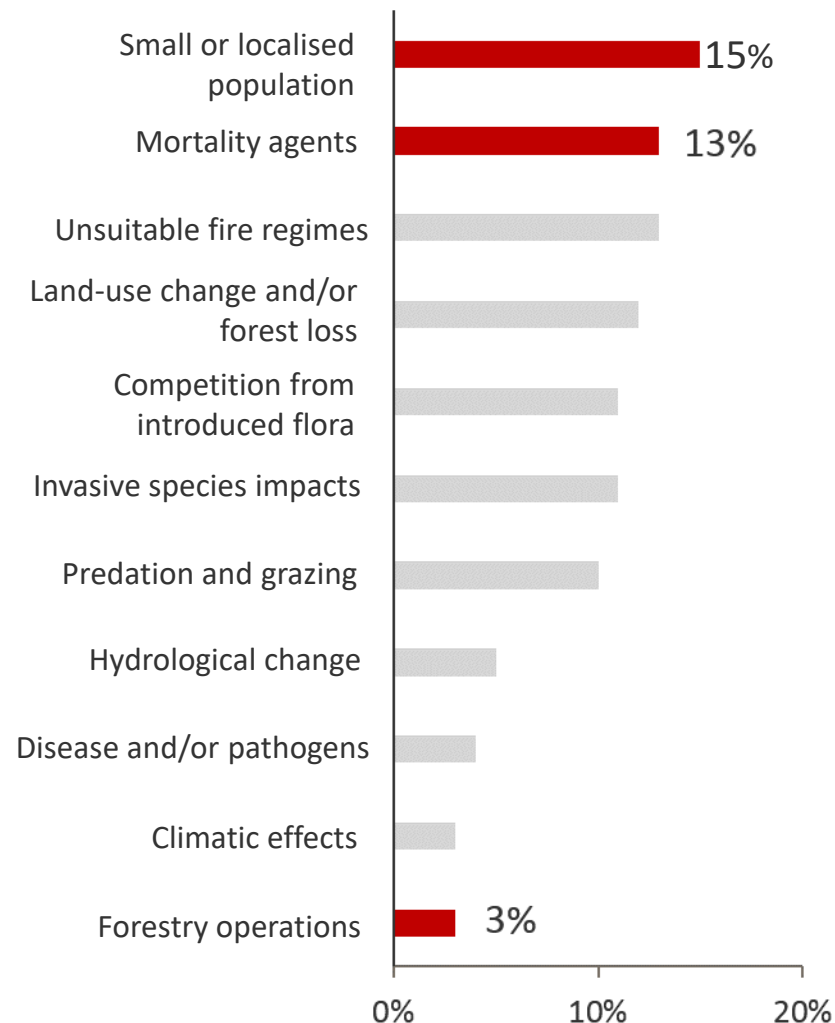


# Threats to forest-dwelling species

## Proportion of total specified threats – fauna



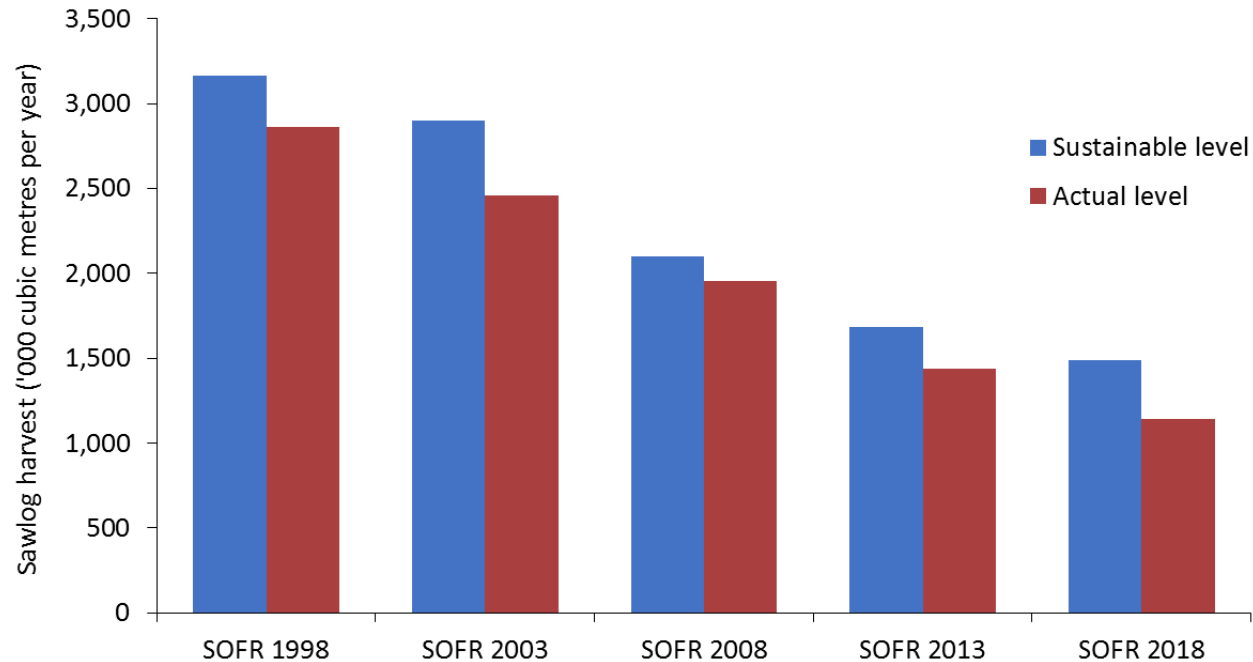
## Proportion of total specified threats – flora





# Harvesting native public forest

National calculated sustainable yield and actual harvest level in native public forests

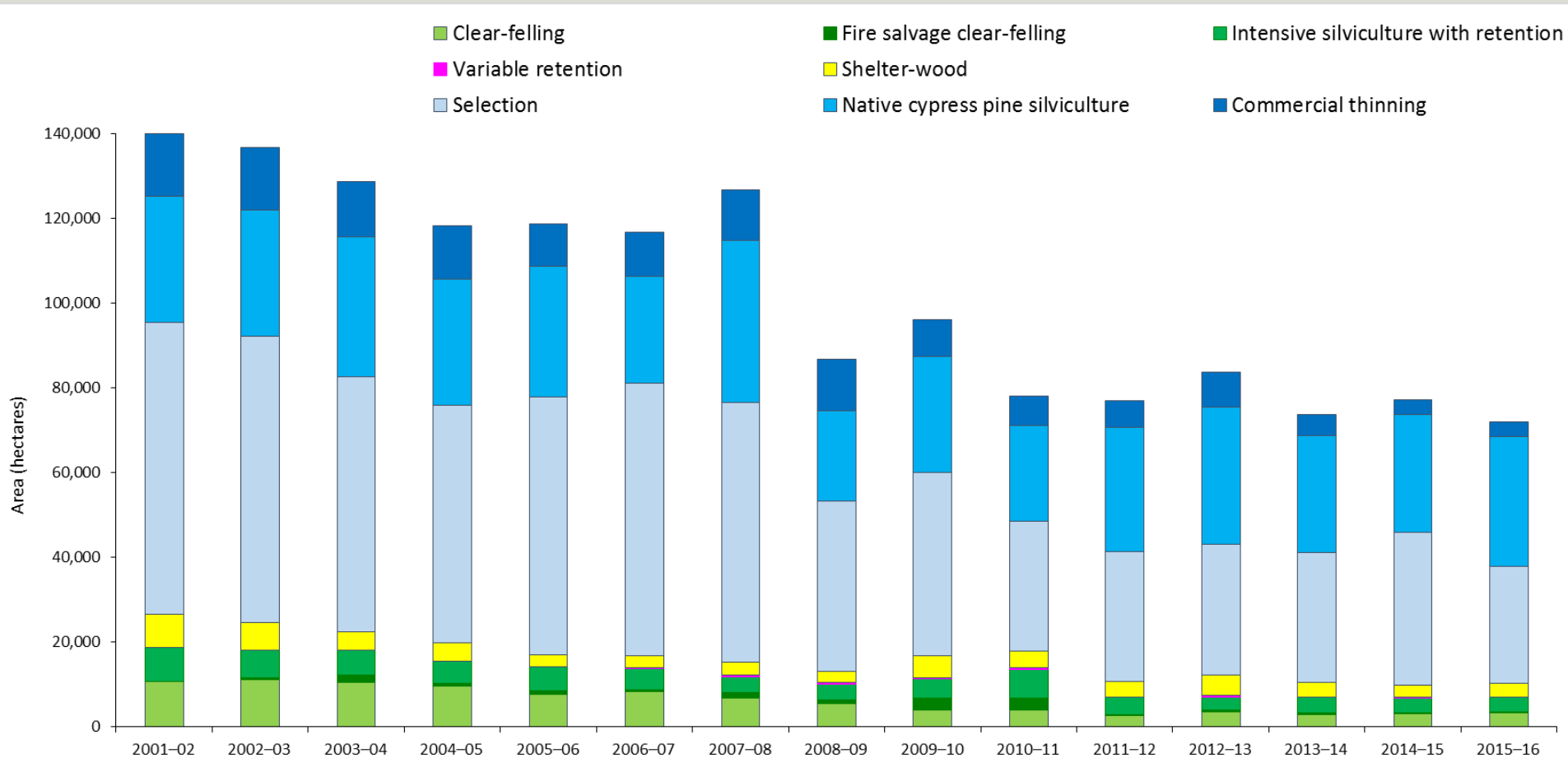


**0.06%**  
of total native  
forest was  
harvested by  
public  
agencies in  
2015–16



# Harvesting native public forest

- 9% of 0.06% was clear-felled → 7,000ha
- **72 to 100%** average effective regeneration 2001–16






# Legislative framework in Australia relevant to forests

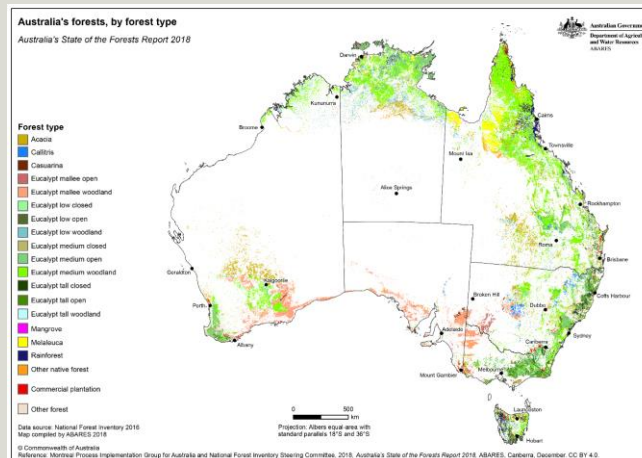



# The Epilogue....

- ABARES is working to make information more
  - Findable, Accessible, Interoperable and Reusable
  - Interactive
- It is already comprehensive, authoritative, credible

## Now, over to you!

1	 Australian Government
2	Department of Agriculture and Water Resources
3	ABARES
4	Data tables and figures from <i>Australia's State of the Forests Report 2018</i>
5	Indicator 1.1a Area of forest by forest type and tenure
6	This workbook contains tables and figures from Indicator 1.1a of <i>Australia's State of the Forests Report 2018</i> . This reports on areas of forest by forest type and tenure, and uses the area for each forest type overtime as a broad n the extent to which forest ecosystems and their diversity are being maintained. Reporting on forest tenure aids understanding of how different land management regimes may impact on forest biodiversity.
7	
8	<a href="#">Table 1.1: Australia's forest area, by jurisdiction</a>
9	<a href="#">Table 1.2: Australia's forest areas by category and type</a>
10	<a href="#">Table 1.3: Australia's native forest area, by forest type and crown cover class</a>






Australian Government  
Department of Agriculture  
ABARES

August 2019

### Australian forest profiles

#### Rainforest




Australia has 3.6 million hectares of the Rainforest native forest type, which is 2.7% of Australia's total native forest area.

Australia's rainforests are typically characterised by high rainfall, lush growth and closed canopies. They rarely experience fire, and generally contain no eucalypts or only the occasional individual eucalypt tree emerging from the rainforest canopy. Rainforest tree species are typically shade-tolerant when young, and establish as saplings in the understorey of mature forest.

Rainforests support a significant part of Australia's biodiversity, including many of Australia's unique plant families. The tropical rainforests in Far North Queensland are rich in mammal, frog and butterfly species, while the cool-temperate rainforests of Tasmania support diverse fungi, mooses and lichens.

They grow into large trees when events such as tree falls, lightning strikes or wind damage (including from cyclones) create gaps in the canopy.



Southern canopy, Spring National Park, New South Wales. Photo by Robert



# The End..... Thank you!

[www.abares.gov.au/forestsaustralia](http://www.abares.gov.au/forestsaustralia)

Contact us on

[Info.ABARES@agriculture.gov.au](mailto:Info.ABARES@agriculture.gov.au)

or

[Cressida.Lehmann@agriculture.gov.au](mailto:Cressida.Lehmann@agriculture.gov.au)

