

Woodlands in Farmed Landscapes: Realising Scope

Chris Perley
Thoughtscapes



THOUGHTSCAPES
PEOPLE, PLACE, POLICY, POTENTIAL

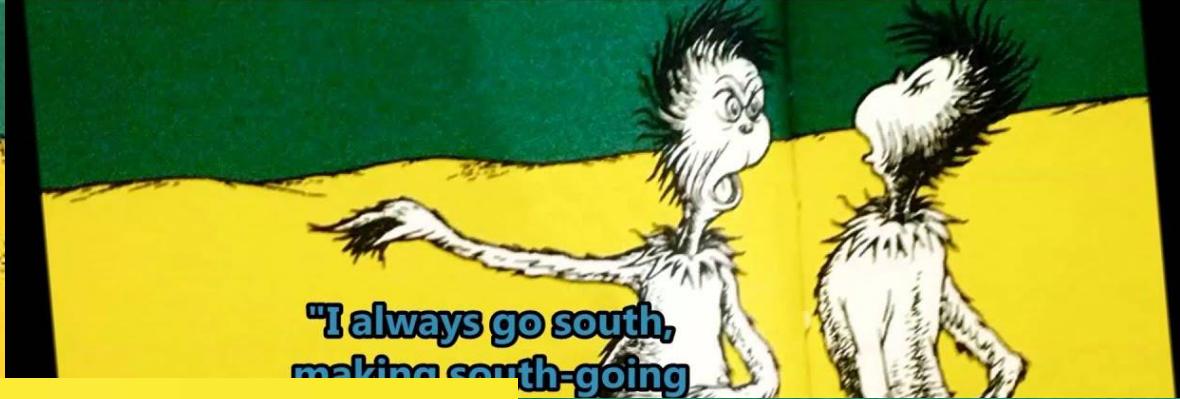
The Context – We’ve stopped listening to the Language of Landscape ... and therefore seeing & realising its potential

- A debate that contrasts blanket trees for carbon with blanket pastoralism – “either-or”, not “and:

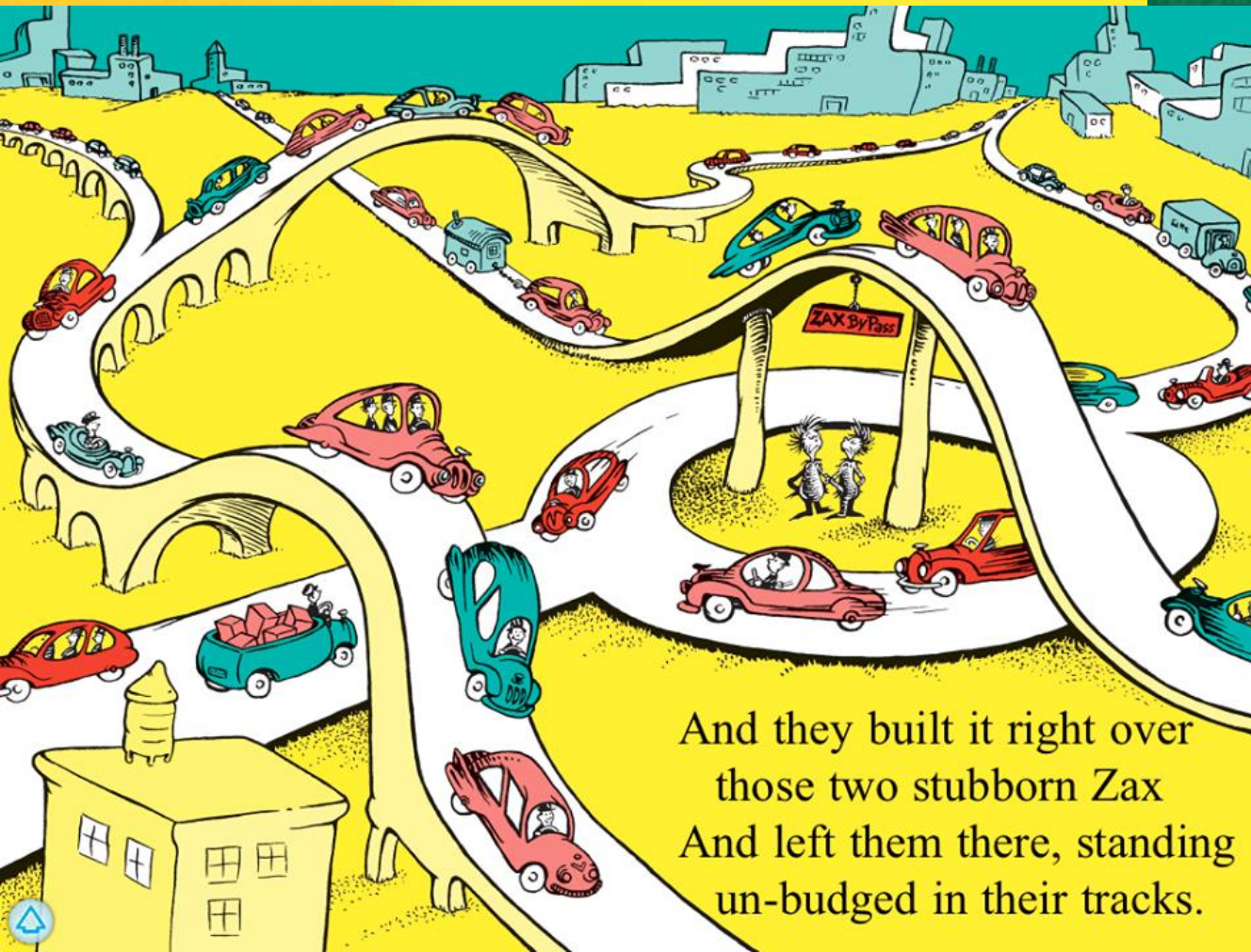


THOUGHTSCAPES
PEOPLE, PLACE, POLICY, POTENTIAL





"I always go south,
making south-going

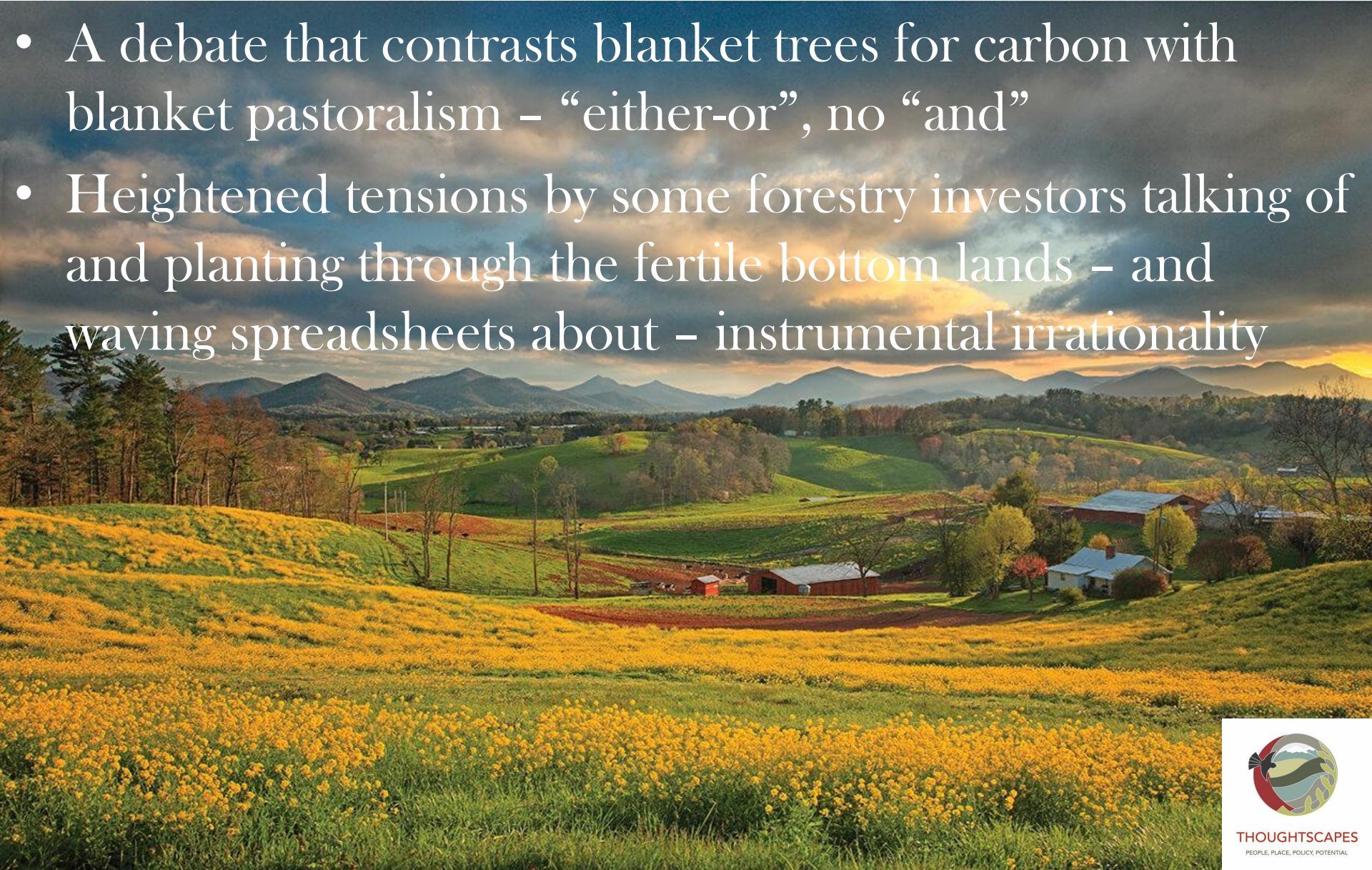


And they built it right over
those two stubborn Zax
And left them there, standing
un-budged in their tracks.



The Context – We’ve stopped listening to the Language – the Song - of Landscape

- A debate that contrasts blanket trees for carbon with blanket pastoralism – “either-or”, no “and”
- Heightened tensions by some forestry investors talking of and planting through the fertile bottom lands – and waving spreadsheets about – instrumental irrationality



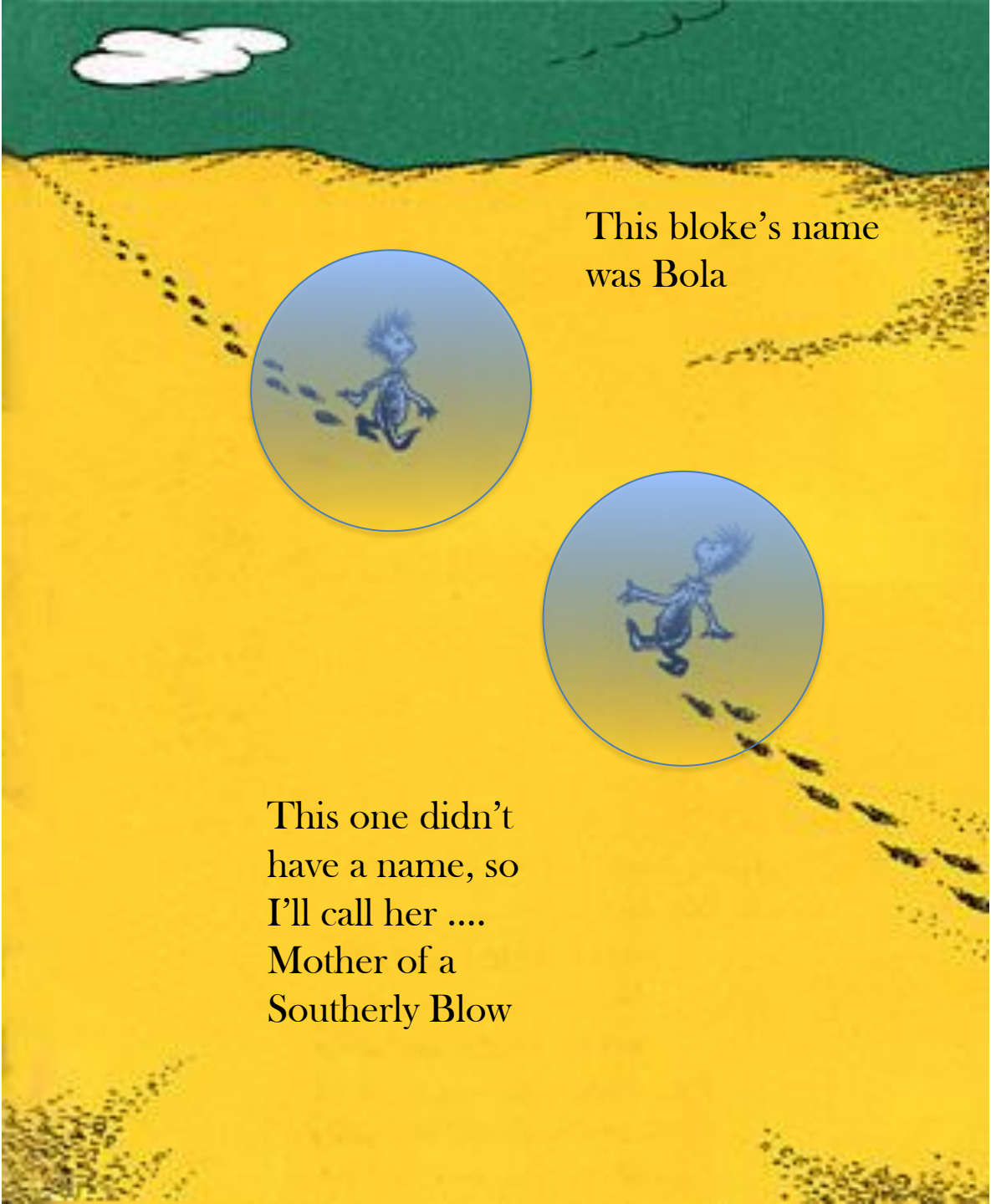


"Remember, children: Whenever you employ Instrumental Rationality, somewhere in the world a Gulag comes into existence!"

The Context – We’ve stopped listening to the Language – the Song - of Landscape

- A debate that contrasts blanket trees for carbon with blanket pastoralism – “either-or”, no “and”
- Heightened tensions by some forestry investors talking of and planting through the fertile bottom lands – and waving spreadsheets about – instrumental irrationality
- The potential of Future Multifunctional Landscapes risks being lost by technocratic narrowness & intransigence
- A replay of the Post-Bola East Coast Forestry programme – Our very own Gulag
 - a corporate radiata pine socially-marginalising, biophysically-ignorant, treasury love fest with “Our Lord Market”
 - Hallowed be they name





This bloke's name
was Bola

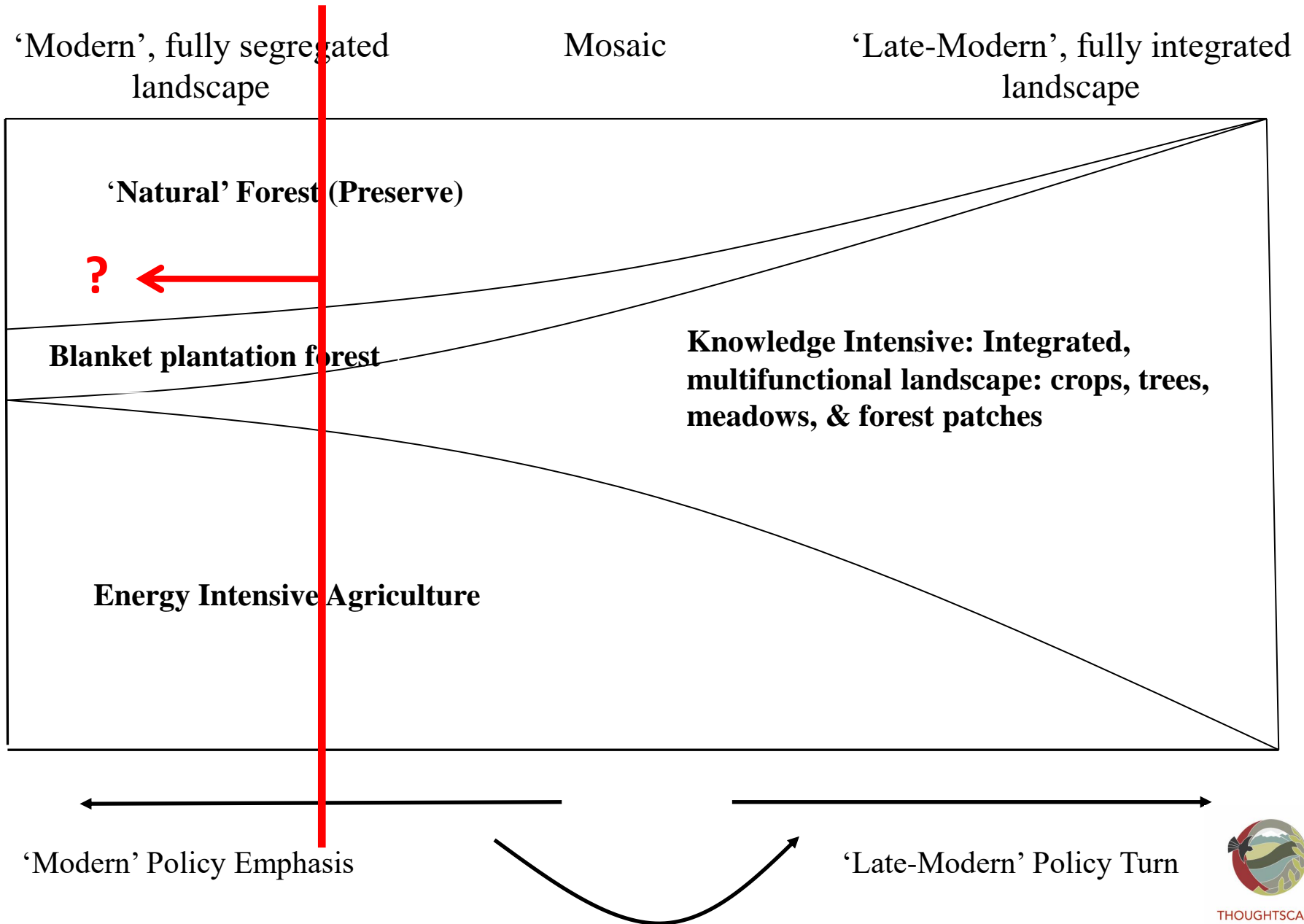
This one didn't
have a name, so
I'll call her
Mother of a
Southerly Blow



Cyclone Bola Context - Uawa Valley, Tolaga Bay, East Coast



Which direction are we going?



Late-Modern Philosophical Framing

- From Landscapes ... as relatively uniform & singular **factories** (Resourcism – even reduced to mere \$s)
- To ... Complex adaptive **socio-ecological systems**
- From ... **Mechanical** - Technocratic emphasis on measurable ‘units’ (quantitative noun ‘things’) -
- To ... **Systems** – recognising complex interrelated ‘functions’ (shifting ‘verbs’ & flows of landscape)
- From ... **Instrumental Rationality** (Radiata makes more money than beech, so do radiata!)
- To ... **Value Rationality** (our people don’t value replacing beech with radiata pine, whatever the numbers say)



The Late-Modern Ontological Shift

– from dispassionate, distant, objective, reducible, predictable machine



To close intimate engagement, breakdown of dualisms (subject:object culture:nature), unpredictability, life function, qualitative & capacity building, archetypal feminine/indigenous ‘virtues’ – care, belong, love, etc.

Late-Modern Biophysical/Economic Policy Framing

- Shift focus of economics to systems framing
 - Patterns, connections, functions, synergies, mutualism, emergence.
- Money Mapping – Revenue & Cost patterns, *not* averages
- Examine each patch – finance *and* function to the whole (hydrology, ecology, stock health, cost savings, functional integrity to whole, emergence)
- UK Cap & Stephens Kakapuaka. Better economics, resilience, social, environmental - win-win-win – ‘ands’ not ‘either-ors’ – Scope not scale – Systems not factories
- Technocrats *still* use narrow averages when ‘analysing’ woodlands within farming systems. Still.



Late-Modern Social Policy Framing

- Shift focus of Policy from Rational Economic Man (*Homo economicus* automaton) acting within the Lord Market's Matrix ... to a cultural/psychology of theory of change
- Current narrow Instrumental Rationality approaches will repel rather than attract.
- DOMA – Direction/Vision, Opportunity/Resources, Motivation (strong social capital), Ability/Skills
- Participation, Active engagement, Integrated Knowledge Systems (4th Gen), ICM, Discussion
- Emphasise Heart (direction, potential, vision, the possible) and motivation (comes with sense of community)
- Capacity building through dialogue, social capital, adaptive learning-by-doing, localised Action Research
- With a *Simple* grant



Realising Potential – Requires the Technocracy to change

- Restructuring our ideas of rationality
- Recognising non-market approaches and the role of the state
- Reintegrated the currently “competitive’ and ‘Dys’-integrated Science-Policy-Advice-Practice knowledge system
- Shifting from Modern industrial factory ‘unit’ ideas of landscape to integrated systems – economic-socio-ecological
- Shifting from assuming trade-offs to assuming synergies
- From disciplinary to transdisciplinary
- From STEM to STEAM





Thank you



THOUGHTSCAPES

PEOPLE, PLACE, POLICY, POTENTIAL